

SECTION A-A FOR
HANDWHEEL OPERATORS
POSITION INDICATOR

| ITEM # | DESCRIPTION | MATERIAL |
|--------|---------------------------|--------------------------------------|
| 1 | HOUSING OPERATOR | CAST IRON, A-126, CLASS B |
| 2 | COVER, HOUSING | CAST IRON, A-126, CLASS B |
| 3 | CAP, THRUST | CAST IRON, A-126, CLASS B |
| 4 | AS REQUIRED | CAST IRON, A-126, CLASS B |
| 5 | LEVER | DUCTILE IRON, A-536, GRADE 80-45-06 |
| 6 | CROSSHEAD | STEEL, CDS AISI 12L14 |
| 7 | SHAFT, INPUT | STEEL, CDS AISI 12L14 |
| 8 | "O" RING | BUNA-N |
| 9 | PLUG, EXPANSION | BRASS COMM. |
| 10 | GASKET, COVER | LOCTITE MASTER GASKET |
| 11 | SHAFT COLLAR | STEEL, CDS AISI 12L14 |
| 12 | INPUT SHAFT PIN | STEEL, COMM. |
| 13 | BOLT, HEX HEAD (AWWA NUT) | STEEL, ASTM A-307, ELECTRO ZINC PLT. |
| 14 | BOLT, HEX HEAD (COVER) | STEEL, ASTM A-307, ELECTRO ZINC PLT. |
| 15 | INDICATOR | CAST IRON, A-126, CLASS B |
| 16 | NUT, HEX | STEEL, ASTM A-563, ELECTRO ZINC PLT. |
| 17 | "O" RING | BUNA-N |
| 18 | PIN, INDICATOR | STEEL, COMM. |
| 19 | BUSHING | NYLON (MOLY-DISULFIDE FILLED) |
| 20 | KEY | STEEL, COMM. |



KENNEDY VALVE

Division of McWane, Inc.
1021 EAST WATER STREET ELMIRA, NEW YORK 14901

DWN: D SKAKAL

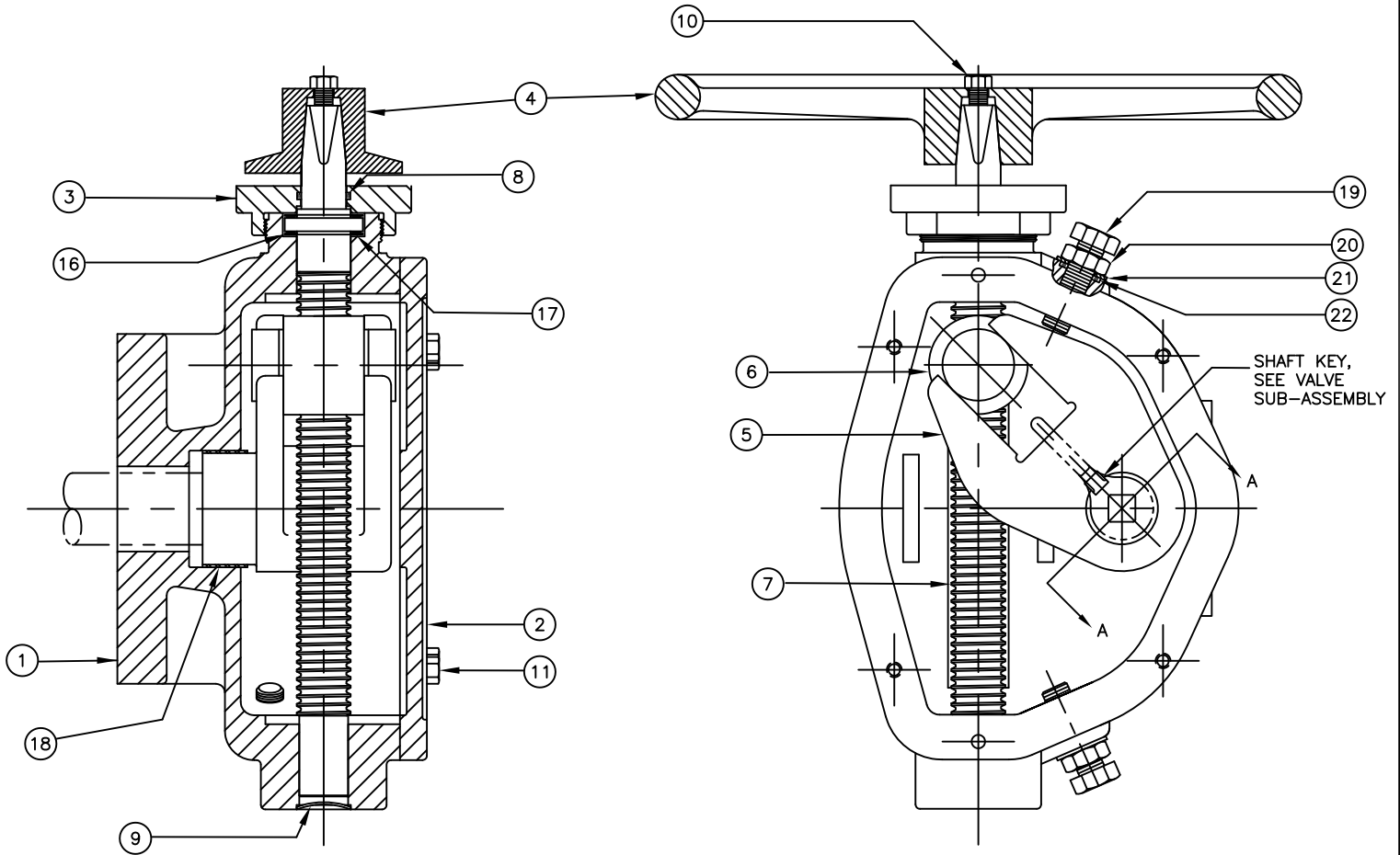
DATE: 5/23/17

DWG. NO.

CAT914C10064-01

65, 150 & 250
MANUAL OPERATOR

SUB-ASSEMBLY / MATERIAL LIST



SHAFT KEY,
SEE VALVE
SUB-ASSEMBLY

SECTION A-A
POSITION INDICATOR FOR
HANDWHEEL OPERATORS

| ITEM NO. | DESCRIPTION | MATERIAL |
|----------|--|-----------------------------------|
| 1 | HOUSING, OPERATOR | CAST IRON, A-126 CL. B |
| 2 | COVER, HOUSING | CAST IRON, A-126 CL. B |
| 3 | CAP, THRUST | CAST IRON, A-126 CL. B |
| 4 | AS REQUIRED(handwheel or operator nut) | CAST IRON, A-126 CL. B |
| 5 | LEVER | DUCTILE IRON, A-536, GR. 65-45-12 |
| 6 | CROSSHEAD | C.D. STEEL, 12L14 |
| 7 | SHAFT, INPUT | C.D. STEEL, 12L14 |
| 8 | SEAL, CAP | BUNA "N" |
| 9 | PLUG, EXPANSION | BRASS, COMMERCIAL |
| 10 | BOLT, HEXHEAD | STEEL, COMMERCIAL |
| 11 | BOLT, HEXHEAD (COVER) | STEEL, COMMERCIAL |
| 12 | INDICATOR | CAST IRON, A-126 CL. B |
| 13 | INDICATOR PIN | C.D. STEEL |
| 14 | SEAL (INDICATOR PIN) | BUNA "N" |
| 15 | NUT, HEX (INDICATOR PIN) | STEEL, COMMERCIAL |
| 16 | BEARING, NEEDLE THRUST | STEEL, COMMERCIAL |
| 17 | RACE, THRUST | HARDENED STEEL |
| 18 | BUSHING | NYLON (MOLY-DISULFIDE FILLED) |
| 19 | BOLT, HEXHEAD (LEVER ADJUSTMENT) | STAINLESS STEEL, 18-8 |
| 20 | NUT, HEX (LEVER ADJUSTMENT) | STEEL, COMMERCIAL |
| 21 | WASHER (LEVER ADJUSTMENT) | STEEL, COMMERCIAL |
| 22 | O-RING (LEVER ADJUSTMENT) | BUNA "N" |

NOTE: ITEM 10 & 11 IS AVAILABLE IN 18-8/316 STAINLESS STEEL WHEN REQUESTED.



KENNEDY VALVE
Division of McWane, Inc.
1021 EAST WATER STREET ELMIRA, NEW YORK 14901

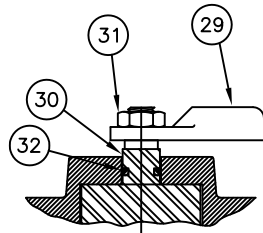
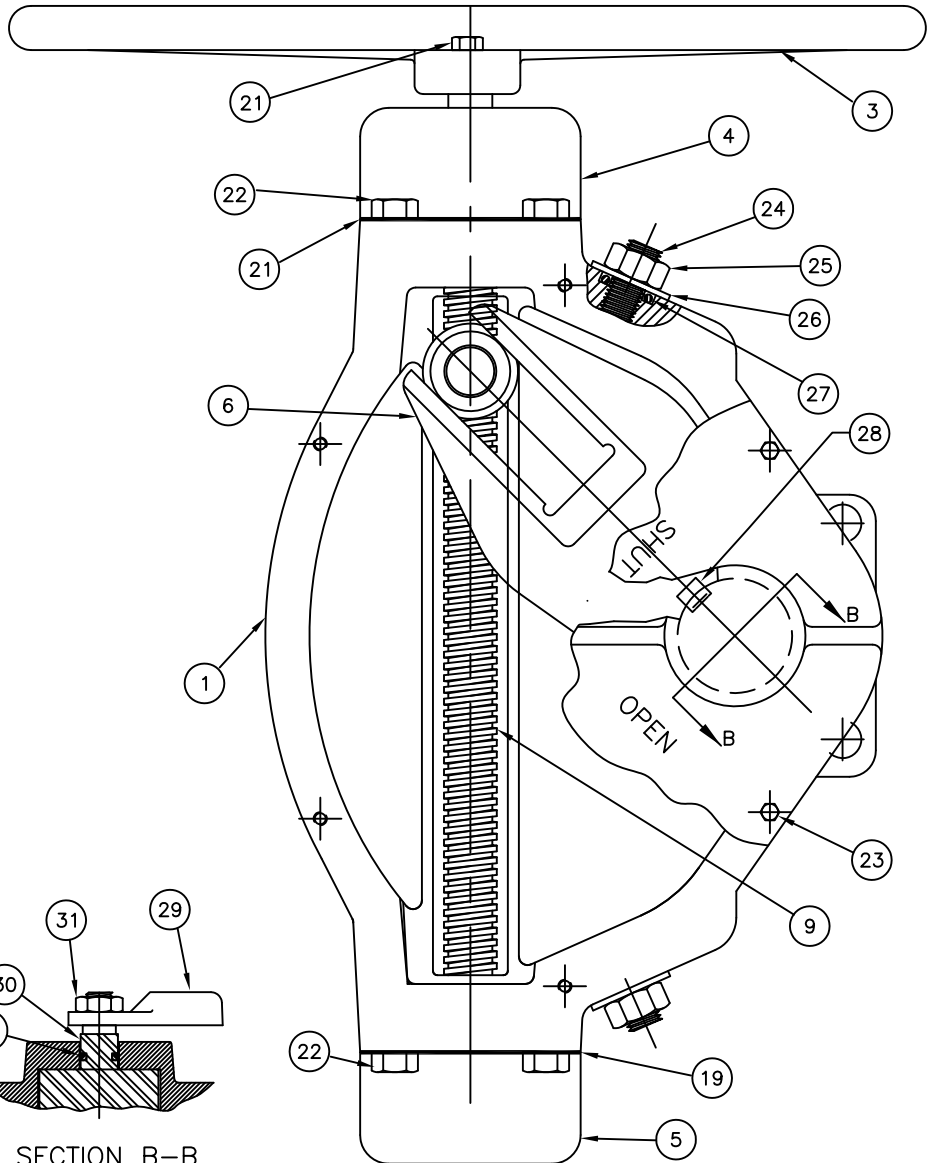
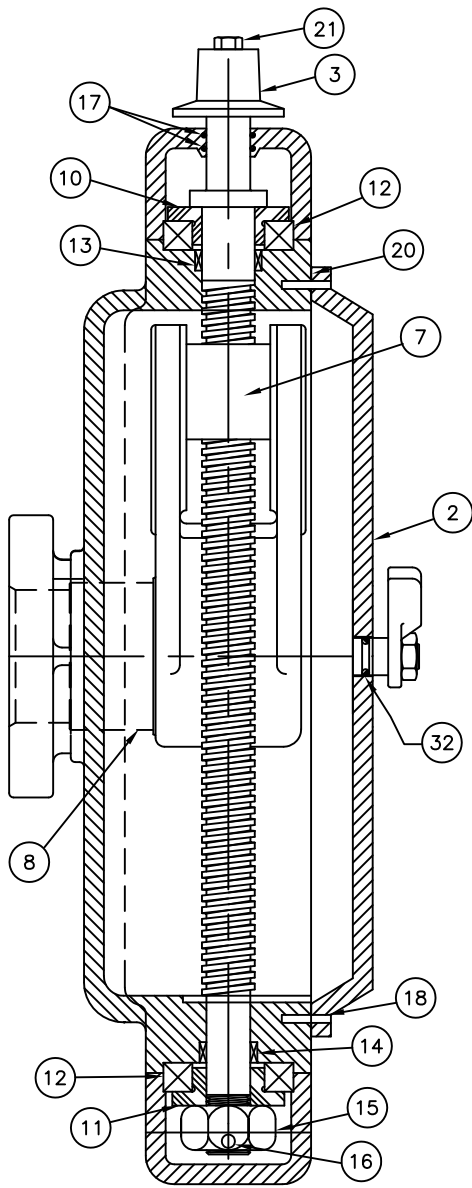
DWN: D SKAKAL

DATE: 5/23/17

DWG. NO.

CAT914C10065-01

SUB-ASSEMBLY / MATERIAL LIST
M&H 510, 1250 & 2200 OPERATOR



SECTION B-B

| ITEM NO. | DESCRIPTION | MATERIAL | NO. REQ. |
|----------|---------------------------|--|----------|
| 1 | OPERATOR HOUSING | CAST IRON, ASTM A-126 CL. B | 1 |
| 2 | HOUSING COVER | CAST IRON, ASTM A-126 CL. B | 1 |
| 3 | OPERATOR NUT OR HANDWHEEL | CAST IRON, ASTM A-126 CL. B | 1 |
| 4 | END CAP (INPUT) | CAST IRON, ASTM A-126 CL. B | 1 |
| 5 | END CAP (LOCK NUT) | CAST IRON, ASTM A-126 CL. B | 1 |
| 6 | LEVER | DUCTILE IRON, ASTM A-536, GR. 65-45-12 | 1 |
| 7 | CROSSHEAD | CDS 12L14 | 1 |
| 8 | BUSHING | NYLATRON GS | 1 |
| 9 | INPUT SHAFT | CDS AISI C1141 (LEADED) | 1 |
| 10 | BEARING RETAINER | CDS AISI C1117 (LEADED) | 1 |
| 11 | BEARING RETAINER | CDS AISI C1117 LEADED | 1 |
| 12 | BALL THRUST BEARING | COMMERCIAL STEEL | 2 |
| 13 | SLEEVE BEARING | OILITE BRONZE | 1 |
| 14 | SLEEVE BEARING | OILITE BRONZE | 1 |
| 15 | SLOTTED NUT | COMMERCIAL STEEL | 1 |
| 16 | LOCK PIN | COMMERCIAL STEEL | 1 |
| 17 | END CAP SEAL | BUNA "N" | 2 |

| ITEM NO. | DESCRIPTION | MATERIAL | NO. REQ. |
|----------|-------------------------------|--|----------|
| 18 | DOWEL PIN | STEEL, COMMERCIAL | 2 |
| 19 | END CAP GASKET | LOCTITE MASTER GASKET | 2 |
| 20 | COVER GASKET | LOCTITE MASTER GASKET | 1 |
| 21 | HEX HEAD CAP SCREW | COMMERCIAL STEEL | 1 |
| 22 | HEX HEAD CAP SCREW | COMMERCIAL STEEL | 8 |
| 23 | HEX HEAD CAP SCREW | COMMERCIAL STEEL | 6 |
| 24 | SETScrew (LEVER ADJUSTMENT) | 18-8 SS | 2 |
| 25 | HEX JAM NUT(LEVER ADJUSTMENT) | COM. STEEL-ASTM A563 GRADE A, ZINC PLATED-ASTM B-633 | 2 |
| 26 | WASHER (LEVER ADJUSTMENT) | COM. STEEL-ASTM A563 GRADE A, ZINC PLATED-ASTM B-633 | 2 |
| 27 | O-RING (LEVER ADJUSTMENT) | BUNA "N" | 2 |
| 28 | KEY | COMMERCIAL STEEL | 1 |
| *29 | INDICATOR | CAST IRON A-126 CL. B | 1 |
| *30 | INDICATOR PIN | COMMERCIAL STEEL | 1 |
| *31 | NUT, HEX (INDICATOR PIN) | COMMERCIAL STEEL | 1 |
| *32 | O-RING (INDICATOR PIN) | BUNA "N" | 1 |

* PARTS FOR HANDWHEEL ACTUATOR WITH POSITION INDICATOR



KENNEDY VALVE
Division of McWane, Inc.
1021 EAST WATER STREET ELMIRA, NEW YORK 14901

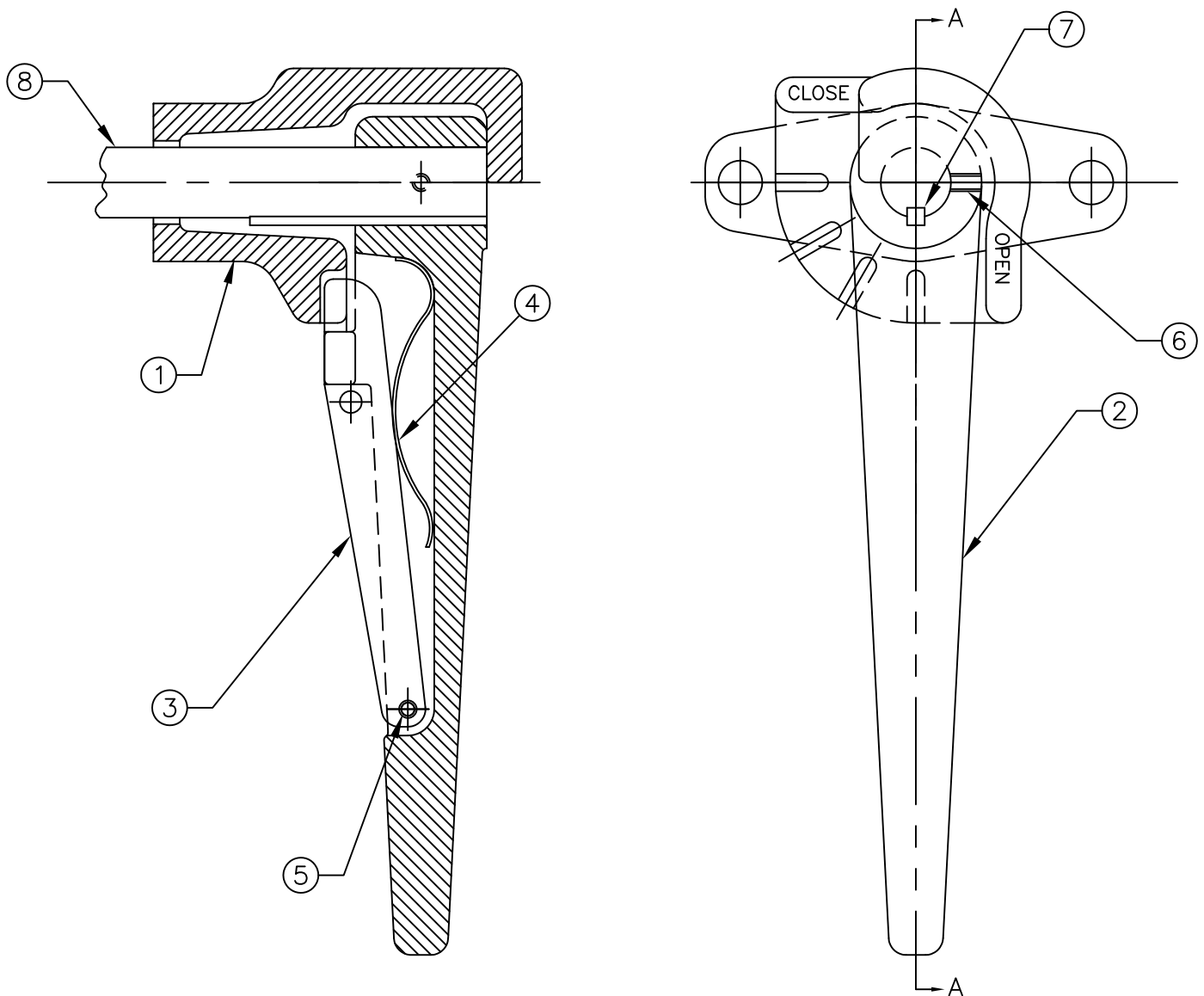
DWN: D SKAKAL

DATE: 5/23/17

DWG. NO.

CAT914C10066-01

SUB-ASSEMBLY / MATERIAL LIST
M&H 4350 OPERATOR



| ITEM NO. | DESCRIPTION | MATERIAL |
|----------|-------------------|------------------------------|
| 1 | BRACKET | CAST IRON; A-126, CL. B |
| 2 | LEVER | CAST IRON; A-126, CL. B |
| 3 | LATCH | CAST IRON; A-126, CL. B |
| 4 | SPRING | SPRING STEEL, CADMIUM PLATED |
| 5 | SPRING PIN | STEEL; CADMIUM PLATED |
| 6 | SCREW, SOCKET SET | ALLOY STEEL |
| 7 | KEY | C-1018 C.F. |
| 8 | SHAFT | STAINLESS STEEL, TYPE 304 |



KENNEDY VALVE

Division of McWane, Inc.
1021 EAST WATER STREET ELMIRA, NEW YORK 14901

DWN: D SKAKAL

DATE: 5/23/17

DWG. NO.

CAT914C10067-01

4" - 6" - 8"

LEVER OPERATOR

SUB-ASSEMBLY / MATERIAL LIST