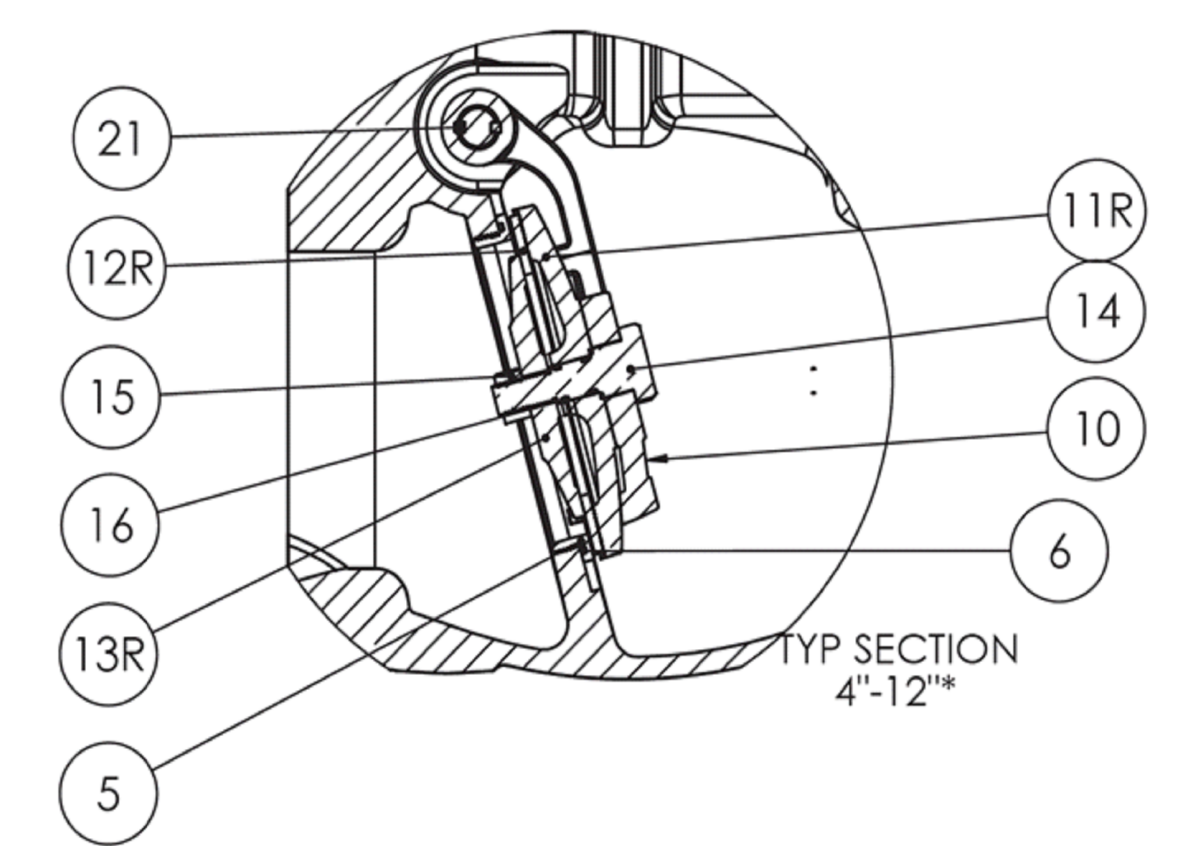
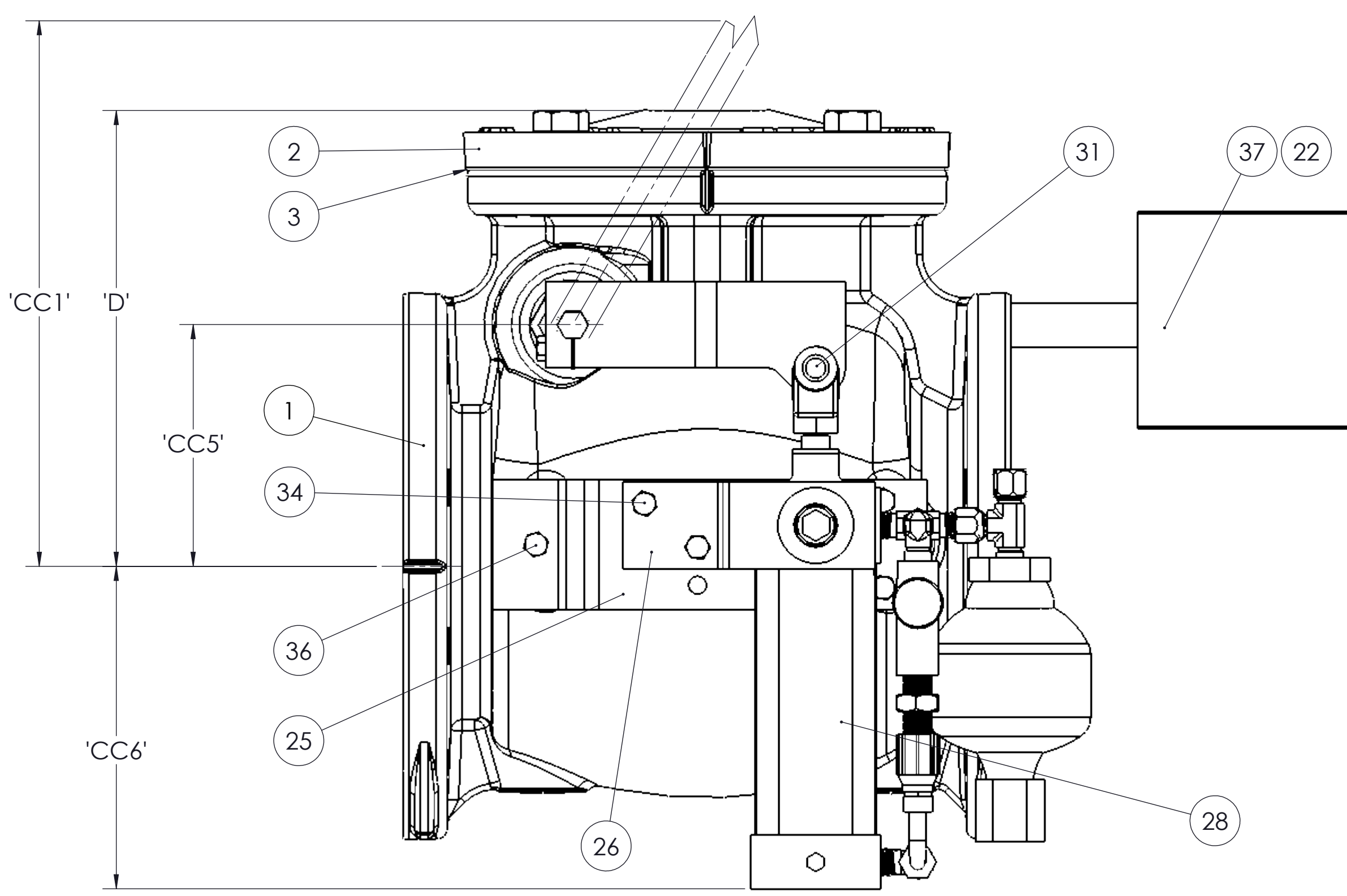
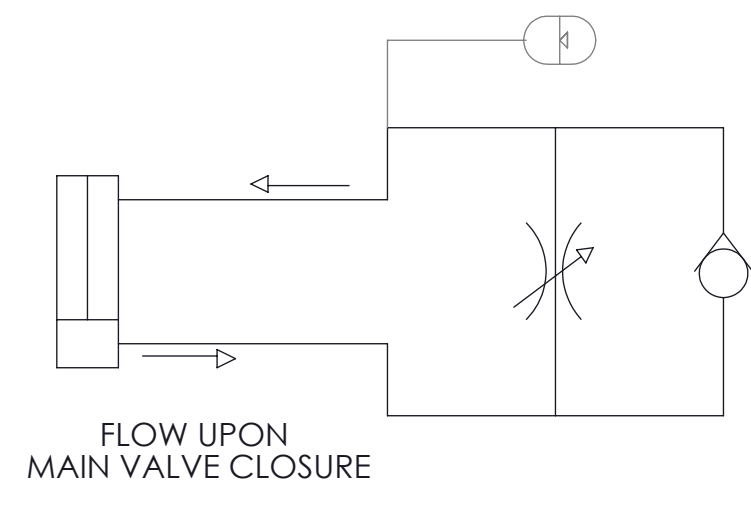


- NOTE:
- 6" VALVE SHOWN. 3"-12" VALVES AVAILABLE WITH RESILIENT SEAT
 - VALVE SHOWN WITH CUSHION ARRANGEMENT ON RIGHT HAND SIDE (FACING INLET; LEFT HAND VERSION AVAILABLE).
 - VALVE OPENING CAN BE SUDDEN. INSTALL GUARDS OR OTHERWISE ASSURE THAT PERSONS ARE WELL CLEAR.
 - CONFIGURATION FOR VERTICAL INSTALLATION FEATURES LEVER ROTATED 90 DEGREES IN CLOCKWISE DIRECTION. FLOW IS UPWARDS.
 - * 3" SIZE FEATURES DISC BOLT INTEGRAL TO DISC HOLDER.
 - 12" HINGE HAS (1) ENLARGED KEY INSTEAD OF (2) STANDARD ONES.



ITEM NO.	DESCRIPTION	MATERIAL	QTY
1	BODY	GRAY IRON- ASTM A126-B	1
2	CAP	GRAY IRON- ASTM A126-B	1
3	O-RING; CAP FLANGE	RUBBER; BUNA-N	1
4	BOLT; CAP	18-8 STAINLESS STEEL-F593, F594	4-6
5	SEAT RING	C89833 OR C87850 BRONZE	1
6	O-RING; SEAT RING	RUBBER; BUNA-N	1
7	STUFFING BOX	C69300 BRONZE; 12" 304SS	2
8	PACKING	NO ASBESTOS	-
9	GLAND FOLLOWER	C69300 BRONZE	2
10	HINGE (DOUBLE KEY)	DUCTILE IRON- ASTM A536	1
11R	DISC HOLDER	3" BRONZE; 4"-12" GRAY IRON- ASTM A126-B	1
12R	DISC	RUBBER; NITRILE	1
13R	DISC PLATE	3" 18-8 STAINLESS; 4"-12" C89833 OR C87850 BRONZE	1
14	DISC BOLT	3" BRONZE; 4"-12" GRAY IRON- ASTM A126-B	1
15	DISC BOLT NUT	18-8 STAINLESS STEEL-F593, F594	1
16	O-RING; DISC BOLT	RUBBER; BUNA-N	2
17	HINGE PIN; SPECIAL	ASTM A 579 GRADE 73; TIN/ELECTROLESS NICKEL PLATED	1
18	LEVER	STEEL	1
19	KEY; LEVER	STAINLESS STEEL	2
20	SET SCREW; LEVER	STEEL PLATED	1
21	KEY; HINGE	STAINLESS STEEL; 12" COLD WORKED	2
22	SET SCREW; WEIGHT	STEEL- PLATED	1
23	CYLINDER ARM	STEEL;; 12" 1045 STEEL	1
24	HEX HEAD CAP SCREW; CYLINDER	STEEL	2
25	BRACKET; BODY CYLINDER	STEEL	1
26	BRACKET; OUTER	STEEL	1
27	BRACKET; INNER	STEEL	1
28	HYDRAULIC CYLINDER	PARKER 4ML; HYDRAULIC/PNEUMATIC CYLINDER	1
29	BUSHING; BRACKET	STEEL	2
30	CLEVIS ROD END	STEEL	1
31	COUPLING PINS; CLEVIS	PIVOT POINT PIN	1
32	SET SCREW; CYLINDER ARM	STEEL; PLATED	2
33	LOCKWASHER; BRACKET	STEEL; PLATED	5
34	SCREW; CYLINDER BRACKET	STEEL; PLATED	2
35	NUT; CYLINDER BRACKET	STEEL; PLATED	2
36	SCREW	STEEL; PLATED	3
37	WEIGHT	CAST IRON	1

SIZE	A	D	E	CC1	CC2	CC3	CC4	CC5	CC6	CC7
3	9.5	7.5	6.6	14	13	2.0	12	3.32	9	8.0
4	11.5	9	9.1	14	13	2.4	12	3.75	9	8.5
6	14.0	10	11.2	20	14	3.1	18	5	8	9.7
8	19.5	13	13.6	23	15	4.9	18	6.25	7	11.7
10	24.5	14	16.8	24	19	6.2	18	7.12	12	13.3
12	27.5	16.5	19.1	25	20	8.4	18	8.19	11	15.5

DIMENSIONS APPROXIMATE FOR CHECKING CLEARANCES ONLY
ALLOW CLEARANCE TWO SIDES TO REMOVE SIDE PLUG & ACCESS HINGE PIN

REVISIONS			
ECN	REV.	DESCRIPTION	DATE
	01	RELEASED FOR PRODUCTION	JEB 12/13/2016
	02	UPDATED OIL CYLINDER TO FIXED PIPING	LRW 6/14/2017

UNLESS OTHERWISE SPECIFIED: CASTING DIM: 0" - 4" +/- 1/32" 4" - 8" +/- 3/64" 8" - 12" +/- 1/16" 12" - 18" +/- 3/32" 18" - UP +/- 1/8" DRAFT 2°		NAME JEB	DATE 12/15/15
MACHINING DIM: DUAL DIM. INCHES[MM] FRACTIONAL ± 1/64 ANGULAR ± .5 RADI ± 1/32" TWO PLACE DECIMAL ± .02 THREE PLACE DECIMAL ± .005	APPROVED	BES	6/14/17
FINISH: 125 RMS	DO NOT SCALE DRAWING		
	Weight:		
	MATERIAL:		

KENNEDY VALVE
Division of McWane, Inc.
1021 EAST WATER STREET, ELMIRA, NEW YORK 14901

Certified to ANSI/NSF 61

TITLE: 3"-12" OIL CUSHION CHECK VALVE ASSEMBLY

SIZE	PART NO.	DWG. NO.	REV
D	81746	81746	02

PROPRIETARY AND CONFIDENTIAL
THE INFORMATION CONTAINED IS THE SOLE PROPERTY OF KENNEDY VALVE CO. IS PROHIBITED. DESIGN & INVENTION RIGHTS RESERVED.

SHEET 1 OF 1