

1. FLOW MAY BE IN EITHER DIRECTION
2. VALVE SHAFT WILL MEET OR EXCEED AWWA C504 REQUIREMENTS
3. REFERENCE AWWA C504 FOR FLANGES AND DRILLING (ANSI 125)
4. 29 NUMBER OF TURNS TO CLOSE
5. 8 BOLTS ON FLANGE, 6 BOLTS ON MJ
6. 3/4" DIAMETER OF BOLTS
7. OPERATED BY 2" AWWA OPERATING NUT/WRENCH NUT
8. RATED AND TESTED FOR 150psi WORKING PRESSURE

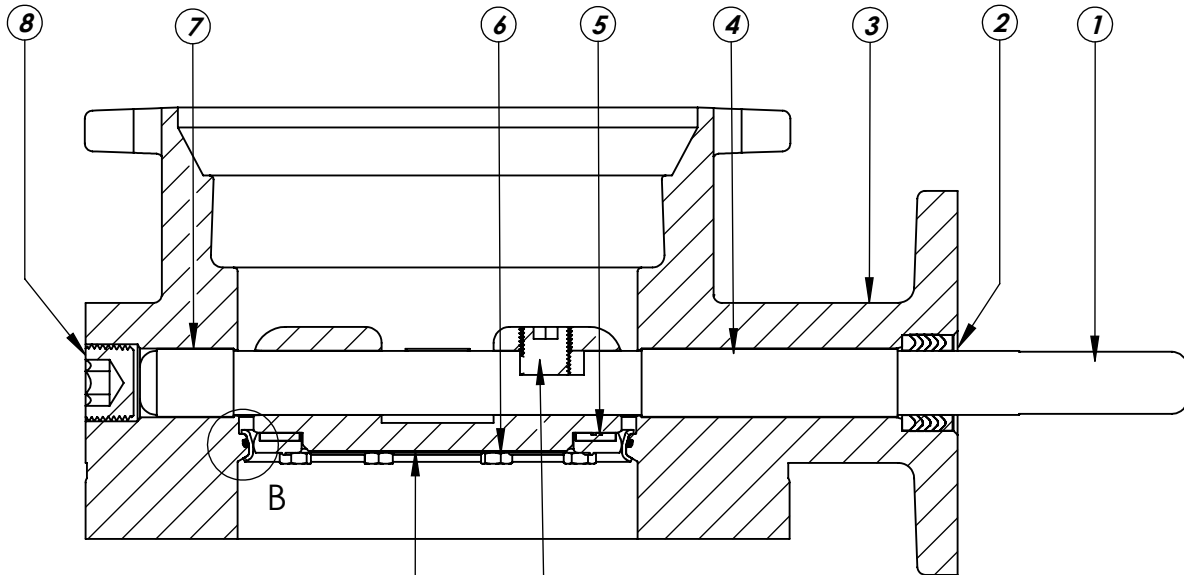
THIS DWG. AND ALL INFORMATION IS OUR PROPERTY AND SHALL NOT BE USED, COPIED, OR REPRODUCED WITHOUT WRITTEN CONSENT. DESIGN AND INVENTION RIGHTS RESERVED.



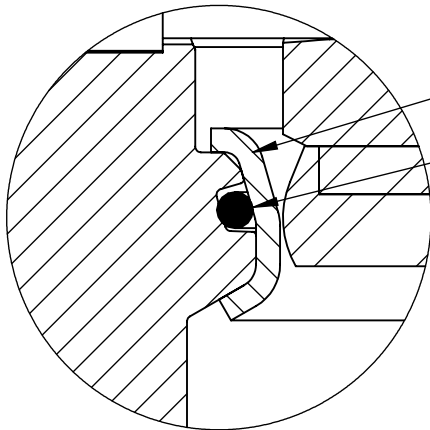
KENNEDY VALVE
Division of McWane, Inc.
1021 EAST WATER STREET ELMIRA, NEW YORK 14901

DRAWN: CTJ
DATE: 11/26/2018
DWG. NO.: B06XAM11

6" - Style 4500 - CL150
BFV with F/A 12 MSS/ISO Connection-
FMJ ENDS - Buried Operator



SECTION A-A
SCALE 1 : 3



DETAIL B
SCALE 2 : 1

ITEM NO.	DESCRIPTION	MATERIAL
1	VANE SHAFT	304 STAINLESS STEEL, ASTM A-276
2	V-RING PACKING SET	EPDM, BUNA-N
3	BFV BODY	DUCTILE IRON ASTM A-536
4	UPPER JOURNAL BEARING	NYLATRON
5	VANE SEAT RING	EPT with SS INSERT
6	HEX HEAD CAPSCREW	18-8 STAINLESS STEEL with NYLOC PATCH
7	LOWER JOURNAL BEARING	NYLATRON
8	BFV BODY END PLUG	STEEL
9	BFV VANE	DUCTILE IRON ASTM A-536
10	VANE SHAFT TORQUE PLUG	18-8 STAINLESS STEEL
11	BODY SEAT RING	316 STAINLESS STEEL
12	BODY SEAT O-RING	BUNA-N

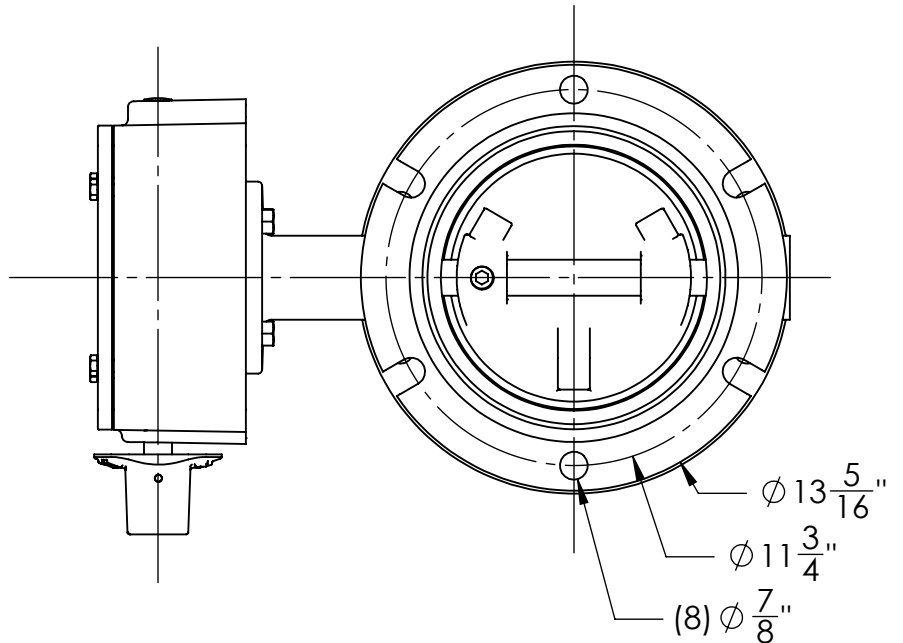
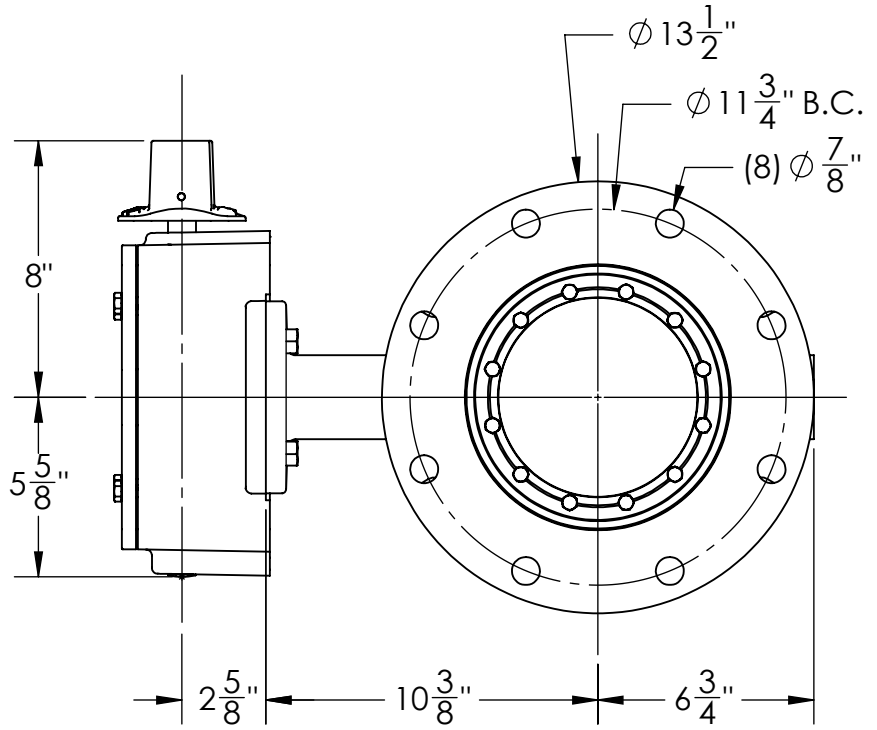
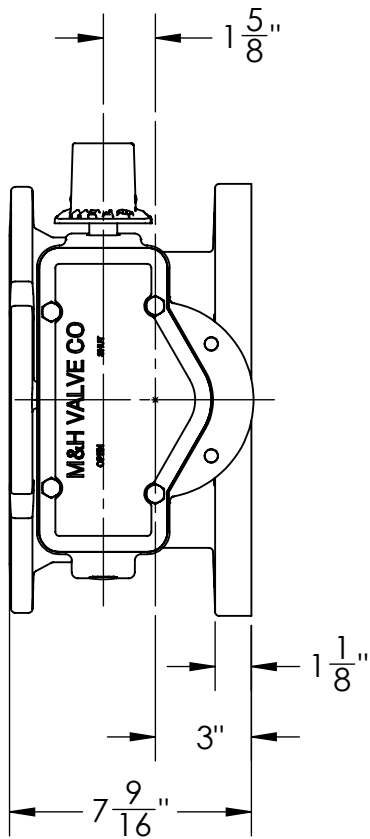
THIS DWG. AND ALL INFORMATION IS OUR PROPERTY AND SHALL NOT BE USED, COPIED, OR REPRODUCED WITHOUT WRITTEN CONSENT. DESIGN AND INVENTION RIGHTS RESERVED.



KENNEDY VALVE
Division of McWane, Inc.
1021 EAST WATER STREET ELMIRA, NEW YORK 14901

DRAWN: ZF
DATE: 1/6/17
DWG. NO. B06XBB11

**6" AWWA C504 - Style 4500 - CL150
BFV with F/A 12 MSS/ISO Connection
Sub-Assembly - Material List
FMJ ENDS**



1. FLOW MAY BE IN EITHER DIRECTION
2. VALVE SHAFT WILL MEET OR EXCEED AWWA C504 REQUIREMENTS
3. REFERENCE AWWA C504 FOR FLANGES AND DRILLING (ANSI 125)
4. 29 TURNS TO CLOSE
5. 8 BOLTS ON FLANGE SIDE, 6 ON MJ SIDE
6. 3/4" DIAMETER OF BOLTS
7. OPERATED BY 2" AWWA OPERATING NUT/WRENCH NUT
8. RATED AND TESTED FOR 150psi WORKING PRESSURE

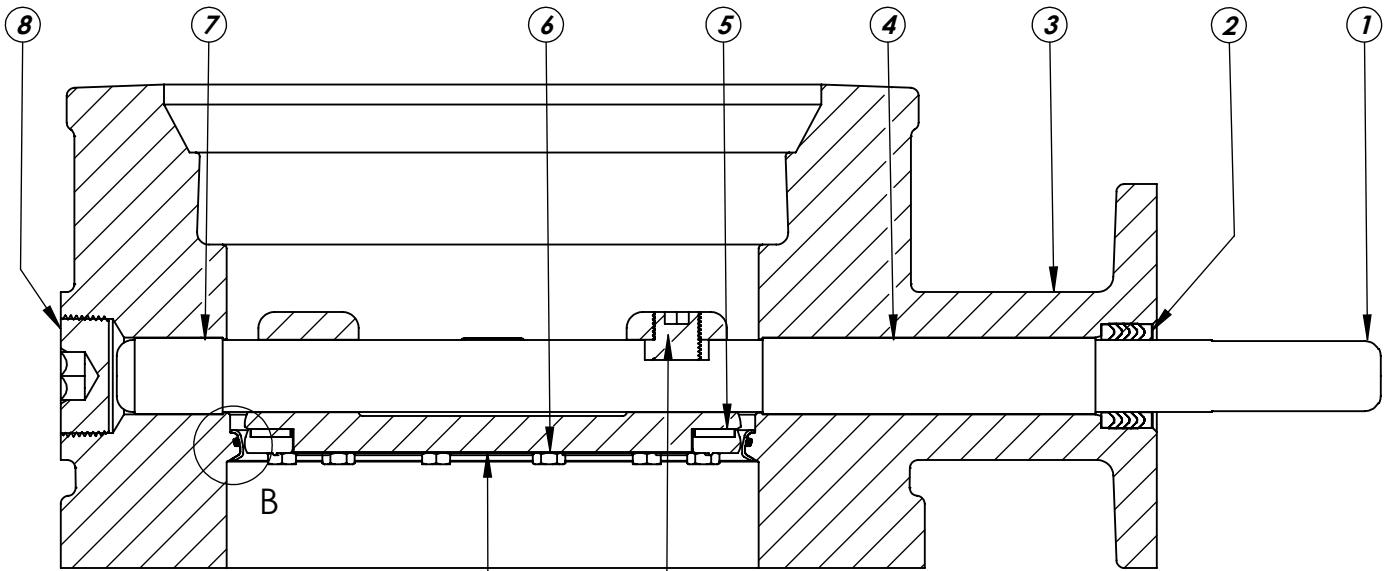
THIS DWG. AND ALL INFORMATION IS OUR PROPERTY AND SHALL NOT BE USED, COPIED, OR REPRODUCED WITHOUT WRITTEN CONSENT. DESIGN AND INVENTION RIGHTS RESERVED.



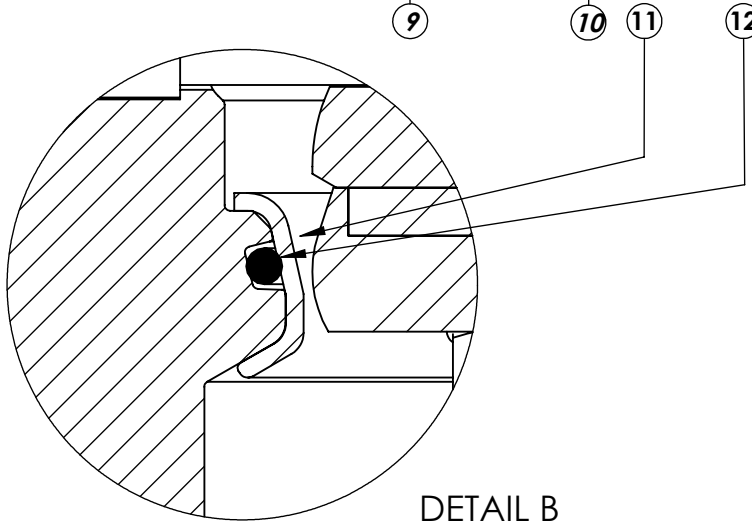
KENNEDY VALVE
Division of McWane, Inc.
1021 EAST WATER STREET ELMIRA, NEW YORK 14901

DRAWN: CTJ
DATE: 11/26/2018
DWG. NO.: B08XAM11

8" - Style 4500 - CL150
BFV with F/A 12 MSS/ISO Connection-
FMJ ENDS - Buried Operator



SECTION A-A
SCALE 1 : 3



DETAIL B
SCALE 2 : 1

ITEM NO.	DESCRIPTION	MATERIAL
1	VANE SHAFT	304 STAINLESS STEEL, ASTM A-276
2	V-RING PACKING SET	EPDM, BUNA-N
3	BFV BODY	DUCTILE IRON ASTM A-536
4	UPPER JOURNAL BEARING	NYLATRON
5	VANE SEAT RING	EPT with SS INSERT
6	HEX HEAD CAPSCREW	18-8 STAINLESS STEEL with NYLOC PATCH
7	LOWER JOURNAL BEARING	NYLATRON
8	BFV BODY END PLUG	STEEL
9	BFV VANE	DUCTILE IRON ASTM A-536
10	VANE SHAFT TORQUE PLUG	18-8 STAINLESS STEEL
11	BODY SEAT RING	316 STAINLESS STEEL
12	BODY SEAT O-RING	BUNA-N

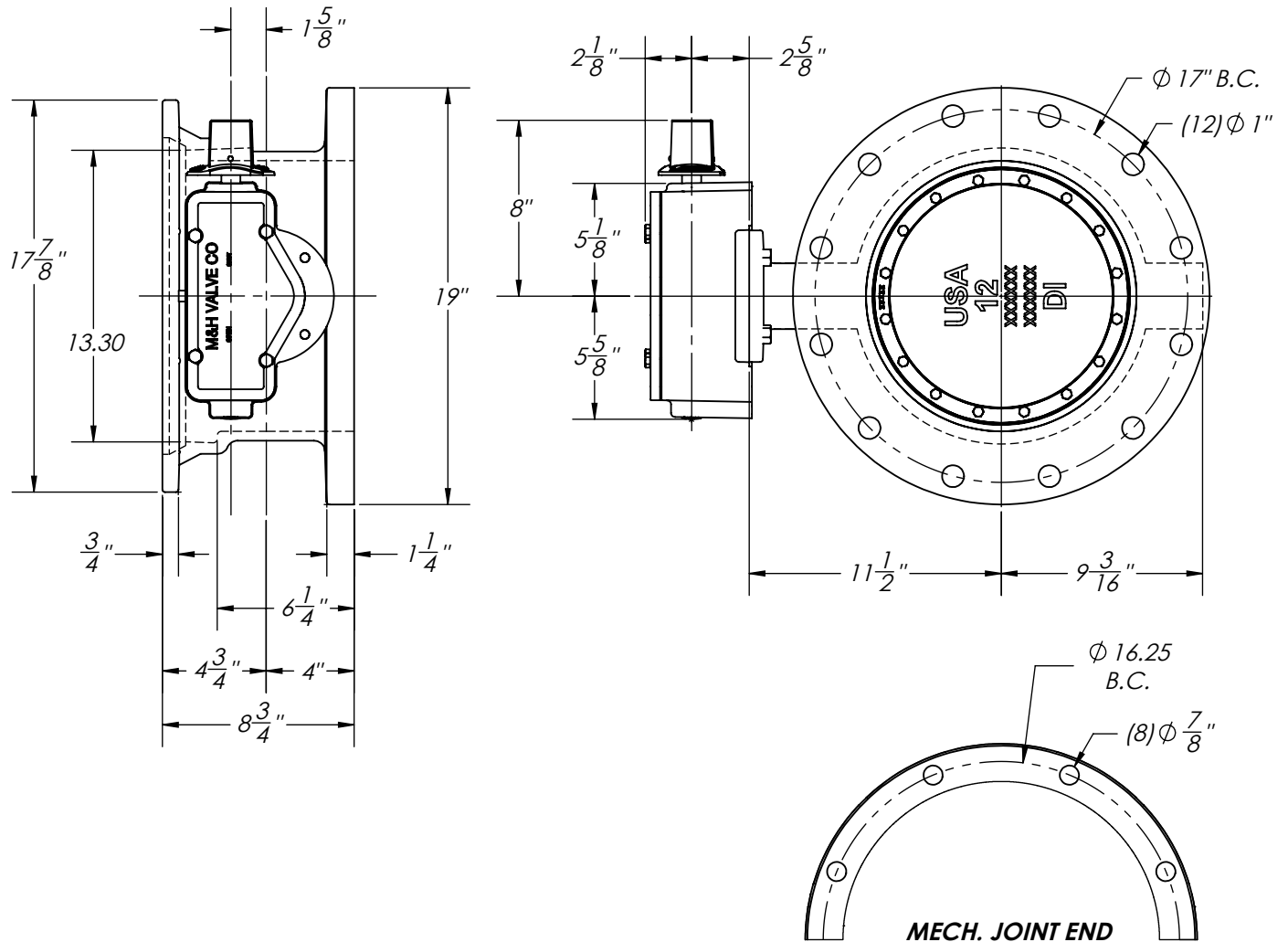
THIS DWG. AND ALL INFORMATION IS OUR PROPERTY AND SHALL NOT BE USED, COPIED, OR REPRODUCED WITHOUT WRITTEN CONSENT. DESIGN AND INVENTION RIGHTS RESERVED.



KENNEDY VALVE
Division of McWane, Inc.
1021 EAST WATER STREET ELMIRA, NEW YORK 14901

DRAWN: ZF
DATE: 1/9/17
DWG. NO. B08XBB11

**8" AWWA C504 - Style 4500 - CL150
BFV with F/A 12 MSS/ISO Connection
Sub-Assembly - Material List
FMJ ENDS**



1. FLOW MAY BE IN EITHER DIRECTION
2. VALVE SHAFT WILL MEET OR EXCEED AWWA C504 REQUIREMENTS
3. REFERENCE AWWA C504 FOR FLANGES AND DRILLING (ANSI 125)
4. 29 TURNS TO CLOSE
5. OPERATED BY 2" AWWA OPERATING NUT/WRENCH NUT
6. RATED AND TESTED FOR 150psi WORKING PRESSURE
7. 7/8" DIA. BOLTS FOR FLANGED SIDE, 3/4" DIA. BOLTS FOR MJ SIDE
8. GASKET, GLANDS, AND BOLTS FOR MECHANICAL JOINT FURNISHED WITH VALVE WHEN SPECIFIED ON ORDER

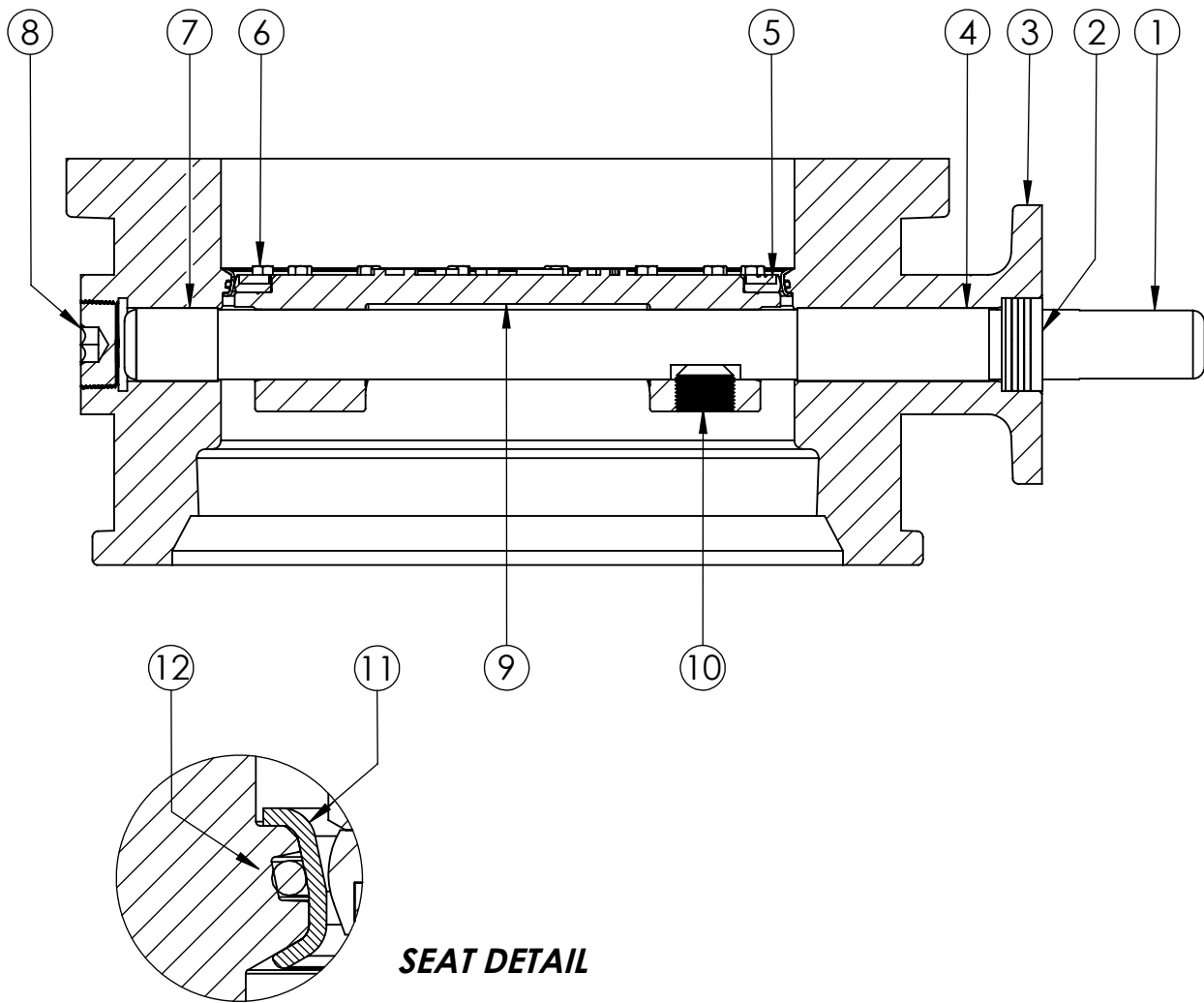
THIS DWG. AND ALL INFORMATION IS OUR PROPERTY AND SHALL NOT BE USED, COPIED, OR REPRODUCED WITHOUT WRITTEN CONSENT. DESIGN AND INVENTION RIGHTS RESERVED.



KENNEDY VALVE
Division of McWane, Inc.
1021 EAST WATER STREET ELMIRA, NEW YORK 14901

DRAWN: CTJ
DATE: 11/26/2018
DWG. NO. B12XAM11

12" - Style 4500 - CL150
BFV with F/A 12 MSS/ISO Connection-
FLANGED x MECH. JOINT - Buried Operator



SEAT DETAIL

ITEM NO.	DESCRIPTION	MATERIAL
1	VANE SHAFT	304 STAINLESS STEEL, ASTM A-276
2	V-RING PACKING SET	EPDM, BUNA-N
3	BFV BODY	DUCTILE IRON ASTM A-536
4	UPPER JOURNAL BEARING	NYLATRON
5	VANE SEAT RING	EPT with SS INSERT
6	HEX HEAD CAPSCREW	18-8 STAINLESS STEEL with NYLOC PATCH
7	LOWER JOURNAL BEARING	NYLATRON
8	BFV BODY END PLUG	STEEL
9	BFV VANE	DUCTILE IRON ASTM A-536
10	VANE SHAFT TORQUE PLUG	18-8 STAINLESS STEEL
11	BODY SEAT RING	316 STAINLESS STEEL
12	BODY SEAT O-RING	BUNA-N

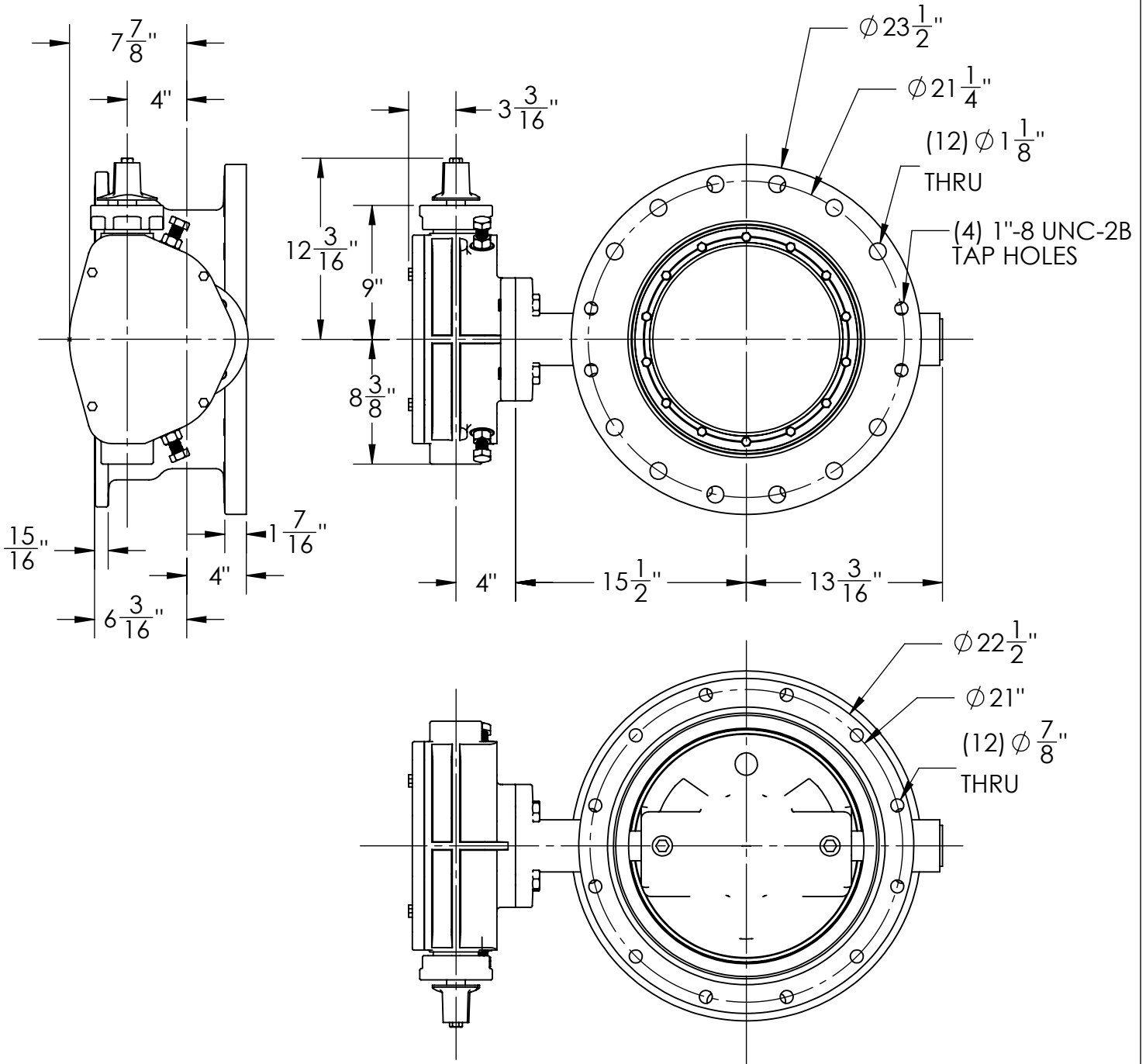
THIS DWG. AND ALL INFORMATION IS OUR PROPERTY AND SHALL NOT BE USED, COPIED, OR REPRODUCED WITHOUT WRITTEN CONSENT. DESIGN AND INVENTION RIGHTS RESERVED.



KENNEDY VALVE
 Division of McWane, Inc.
 1021 EAST WATER STREET ELMIRA, NEW YORK 14901

DRAWN: CTJ
DATE: 8/10/2018
DWG. NO. B12XBB11

**12" AWWA C504 - Style 4500 - CL150
 BFV with F/A 12 MSS/ISO Connection
 Sub-Assembly - Material List
 FLANGED by MECHANICAL JOINT**



1. FLOW MAY BE IN EITHER DIRECTION
2. VALVE SHAFT WILL MEET OR EXCEED AWWA C504 STANDARDS
3. 48 TURNS TO CLOSE
4. 16 BOLTS ON FLANGE SIDE, 12 ON MJ SIDE
5. 1" DIA. BOLTS FOR FLANGED SIDE, 3/4" DIA. BOLTS FOR MJ SIDE
6. OPERATED BY 2" AWWA OPERATING NUT/WRENCH NUT
7. RATED AND TESTED FOR 150psi WORKING PRESSURE
8. GASKETS, GLANDS, AND BOLTS FOR MECHANICAL JOINT FURNISHED WITH VALVE WHEN SPECIFIED ON ORDER
9. WEIGHT OF VALVE IS 450 LBS.

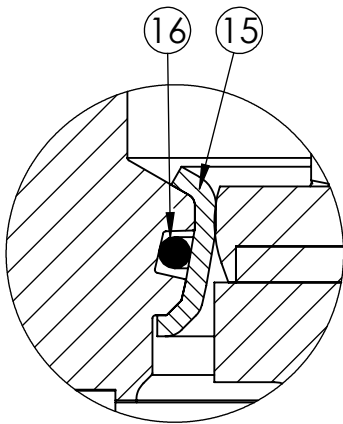
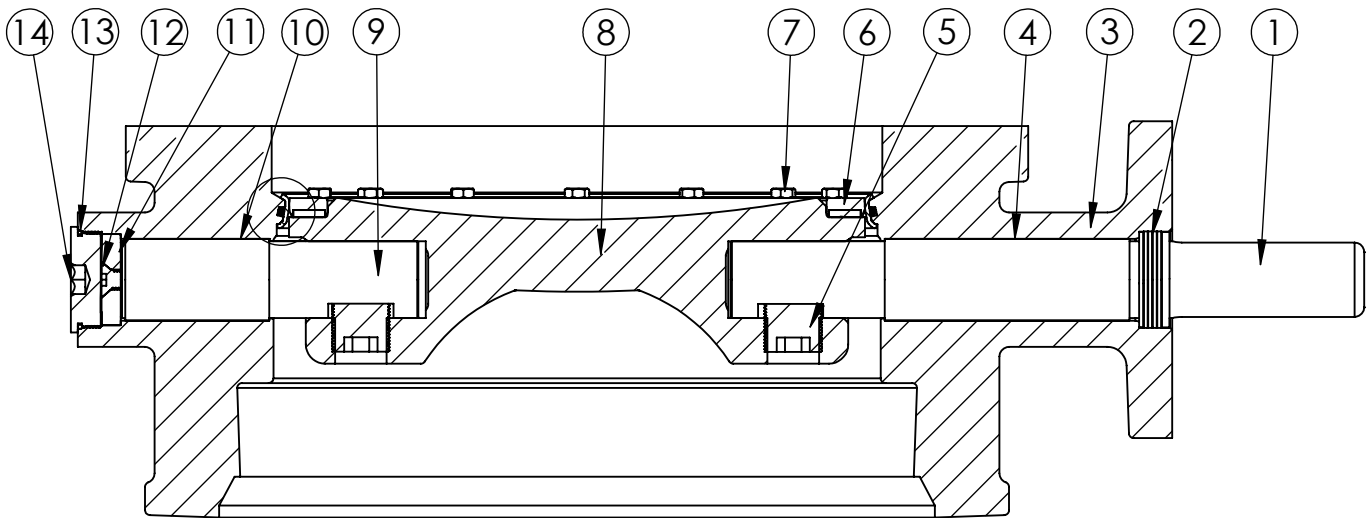
THIS DWG. AND ALL INFORMATION IS OUR PROPERTY AND SHALL NOT BE USED, COPIED, OR REPRODUCED WITHOUT WRITTEN CONSENT. DESIGN AND INVENTION RIGHTS RESERVED.



KENNEDY VALVE
Division of McWane, Inc.
1021 EAST WATER STREET ELMIRA, NEW YORK 14901

DRAWN: CTJ
DATE: 11/26/2018
DWG. NO.: B16XAM11

16" - Style 4500 - CL150
BFV with F/A16 MSS/ISO Connection-
FE x FE ENDS - Buried Operator



SEAT DETAIL

ITEM NO.	DESCRIPTION	MATERIAL
1	OPERATOR SHAFT	304 STAINLESS STEEL, ASTM A-276
2	V-RING PACKING SET	EPDM, BUNA-N
3	BFV BODY	DUCTILE IRON ASTM A-536
4	UPPER JOURNAL BEARING	FIBER & REINFORCED TEFLON
5	TORQUE PLUG	304 STAINLESS STEEL, ASTM A-276
6	VANE SEAT RING	EPT W/ STAINLESS STEEL INSERT
7	HEX HEAD CAP SCREW	18-8 STAINLESS STEEL W/ NYLOC PATCH
8	BFV VANE	DUCTILE IRON ASTM A-276
9	THRUST SHAFT	304 STAINLESS STEEL, ASTM A-276
10	LOWER JOURNAL BEARING	FIBER & REINFORCED TEFLON
11	THRUST BEARING	BRONZE ALLOY
12	THRUST BEARING CAP SCREW	18-8 STAINLESS STEEL
13	BODY END PLUG O-RING	BUNA-N
14	BODY END PLUG	STEEL
15	BODY SEAT RING	316 STAINLESS STEEL
16	BODY SEAT O-RING	BUNA-N

THIS DWG. AND ALL INFORMATION IS OUR PROPERTY AND SHALL NOT BE USED, COPIED, OR REPRODUCED WITHOUT WRITTEN CONSENT. DESIGN AND INVENTION RIGHTS RESERVED.



KENNEDY VALVE
 Division of McWane, Inc.
 1021 EAST WATER STREET ELMIRA, NEW YORK 14901

DRAWN: ZF
DATE: 8/31/2018
DWG. NO.
 B16XBB11

16" AWWA C504 - STYLE 4500 - CL150
 BFV w/ F/A16 MSS/ISO CONNECTION
 SUB-ASSEMBLY - MATERIAL LIST
 FMJ ENDS