

## High Pressure Resilient Wedge Gate Valve

Kennedy Valve AWWA C515 Resilient Wedge Gate Valves meet or exceed the requirements of AWWA standard C515, UL-262/FM-1120/1130, ULC - Underwriters' of Canada, and NSF Listed.

Available in either non-rising stem (NRS) or outside screw & yoke (OS&Y). NRS style is available with post plate for adaptation with an indicator post. Handwheel is standard for OS&Y.

### END CONNECTIONS & SIZE RANGE

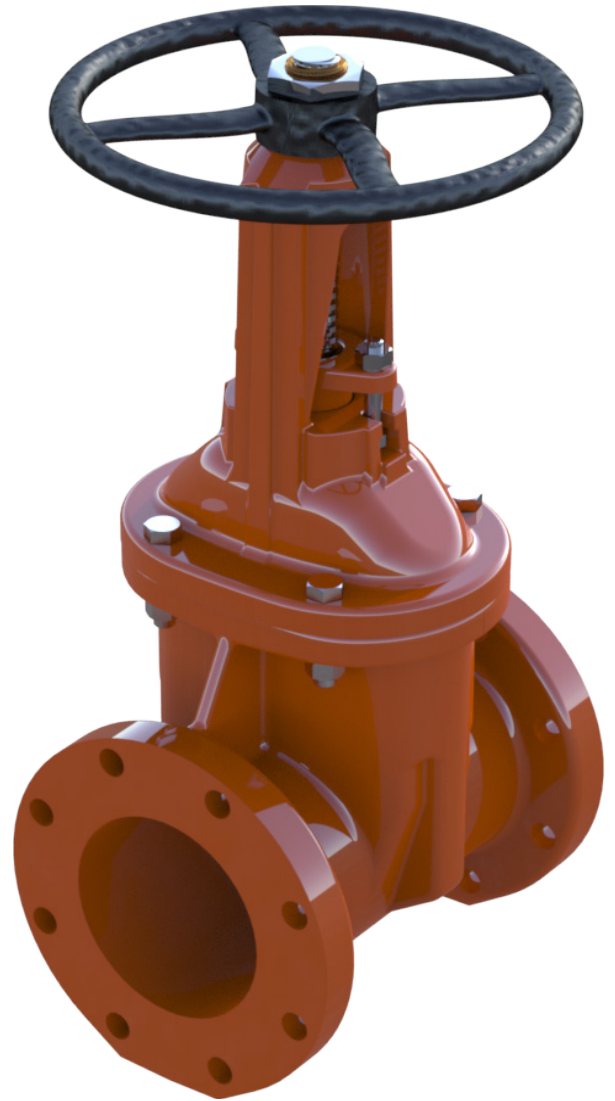
#### C515 KS-RWHP 350 PSI (DUCTILE)

END CONNECTION	NRS	OS&Y
Flanged (Class 125)	4" - 12"	3" - 12"
Flanged (Class 250)	4" - 12"	4" - 12"
GRV	3" - 8"	4" - 8"
FLG x GRV	3" - 8"	4" - 8"
MJ	4" - 12"	
FLG x MJ	4" - 12"	
MJ x Tap	4" - 12"	
Tyton	4" - 12"	
FLG x Tyton	4" - 12"	
Tapped	4" - 12"	

#### C509 KS-FWHP 350 PSI (DUCTILE)

END CONNECTION	NRS	OS&Y
Flanged (Class 125)	2.5" - 3"	2.5" - 3"
Flanged (Class 250)	2.5" - 3"	2.5" - 3"
MJ	3"	
Threaded	2.5" - 3"	
PVC	2.5" - 3"	
FLG x MJ	3"	

\* 3" - 12" NRS Available with Post Indicator Plates



*High Pressure FLG x FLG OS&Y  
with Handwheel is shown*