



MCWANE
PLANT & INDUSTRIAL

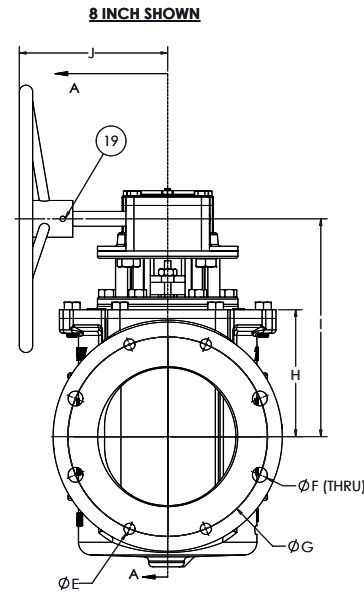
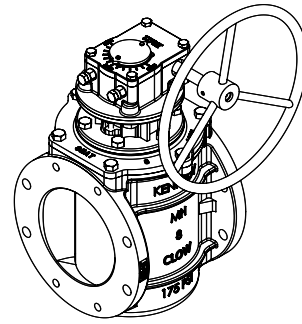
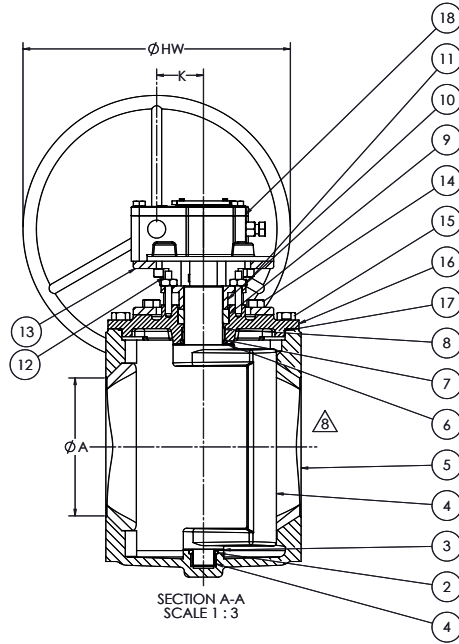
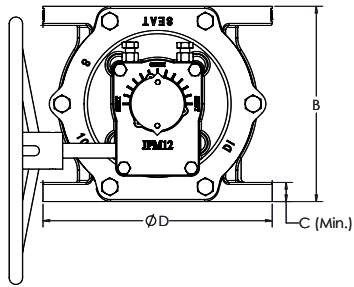


KENNEDY VALVE

100% FULL FLOW ECCENTRIC PLUG VALVE WITH FLANGED ENDS AND GEAR - HW SIZES 3" - 16"

DRAWING NO.- SUB910399T REV - 8

DRAWN BY - J CAPPER



DIMENSIONS															
A	B	C	D	E	F	G	H	I	J	K	Weight (lbs.)	JPM Gear	Gear Ratio	No. Turns to Open (Approx.)	Ø HW (in.)
3	8.00	.75	7.50	4 x 5/8-11 I .79	---	6.00	3.76	7.50	8.8	2.8	75 lbs.	JPM12A	40	10	8
4	9.00	.94	9.00	4 x 5/8-11 I .79	4 x .75	7.50	4.63	8.28	8.8	2.8	100 lbs.	JPM12A	40	10	8
6	10.50	1.02	11.00	4 x 3/4-10 I .79	4 x .81	9.50	5.78	10.30	8.8	2.8	165 lbs.	JPM12FA	40	10	12
8	11.50	1.13	13.50	4 x 3/4-10 I .79	4 x .88	11.75	7.48	12.54	8.8	2.8	230 lbs.	JPM12FA	40	10	16
10	13.00	1.19	16.00	8 x 7/8-9 I .79	4 x 1.00	14.25	8.88	14.02	11.3	3.9	340 lbs.	JPM14A	53	13	20
12	14.00	1.26	19.00	8 x 7/8-9 I .79	4 x 1.00	17.00	11.00	16.38	12.1	3.9	480 lbs.	JPM14A	53	13	24
14	17.00	1.38	21.00	8 x 1-8 UNS I 1.54	4 x 1.13	18.75	12.88	18.00	14.9	4.9	720 lbs.	JPM15A	68	17	30
16	17.17	1.44	23.50	8 x 1-8 UNS I 1.06	8 x 1.13	21.25	14.69	22.50	14.9	4.9	850 lbs.	JPM15A	68	17	30

SIZE RANGE	WATER WORKING PRESSURE PSI	HYDROSTATIC TEST PSI
3-12	175 PSI	262.5 PSI
14-16	150 PSI	225 PSI

ITEM	PART NAME	ASTM DESIGNATION	QTY
1	Lower Sleeve Bearing	Sintered Alloy SS316	1
2	Lower Grit Seal	NBR	1
3	Lower Thrust Washer	PTFE	1
4	Plug	ASTM A536 65-45-12 OR 70-50-05 +NBR	1
5	Body	ASTM A536 65-45-12 OR 70-50-05	1
6	Upper Thrust Washer	PTFE	1
7	Upper Grit Seal	NBR	1
8	Upper Sleeve Bearing	Sintered Alloy SS316	1
9	V-Packing	NBR	1
10	Follower Gland	ASTM A536 65-45-12 OR 70-50-05	1
11	Hex Nuts	Stainless Steel ASTM A276.T316	2
12	Studs	Stainless Steel ASTM A276.T316	2
13	Adapter	ASTM A536 65-45-12 OR 70-50-05	1
14	Adapter Bolts	Stainless Steel ASTM A276.T316	6
15	Cover Bolts	Stainless Steel ASTM A276.T316	4
16	Cover	ASTM A536 65-45-12 OR 70-50-05	1
17	Cover O-ring	NBR	1
18	JPM Gear w/ HW	-----	1
19	Slot Type Spring Pin	ASTM A29 1566	1

- NOTE:**
1. Body castings are tri-marked with "Clow", "Kennedy", and "M&H".
 2. For services with 3"-8" Plug Valves in excess of 25 PSI, use of a gear is recommended.
 3. Gear model and brand are subject to change without notice.



MCWANE
PLANT & INDUSTRIAL



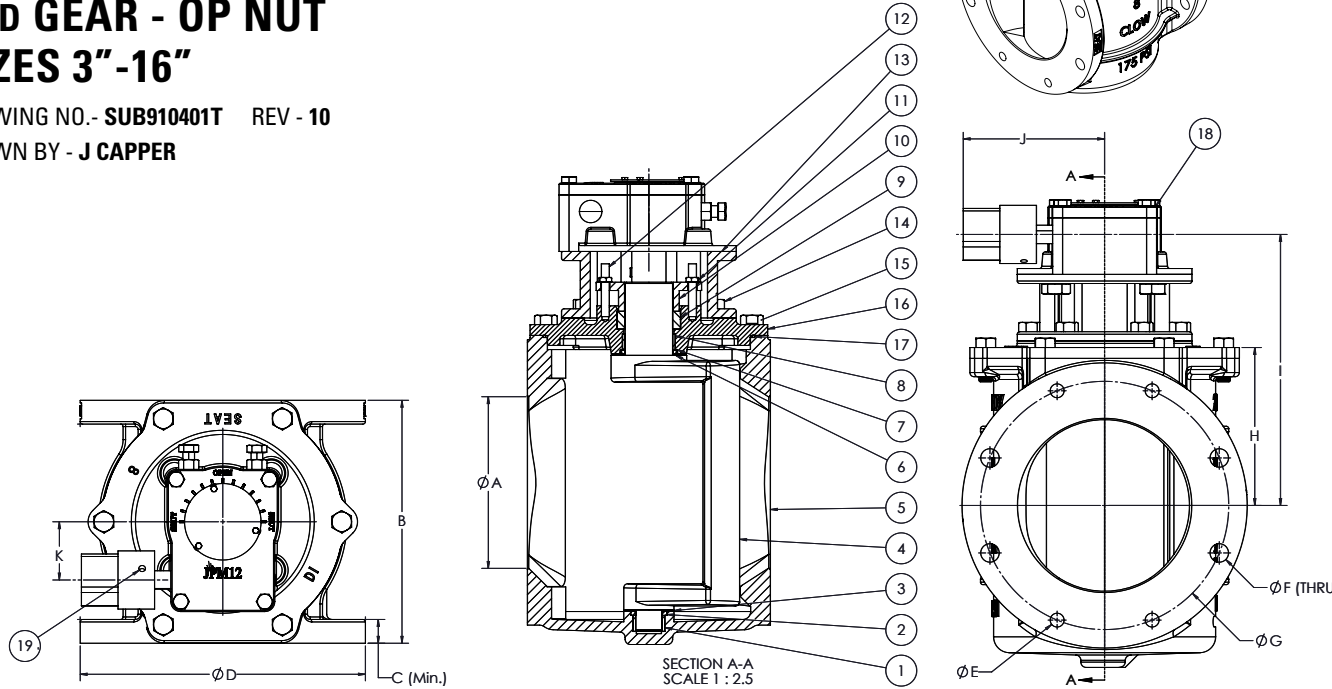
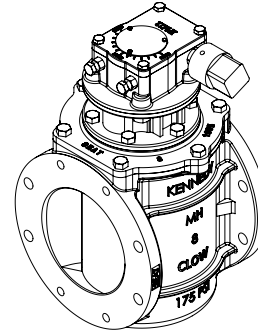
KENNEDY VALVE

**100% FULL FLOW
ECCENTRIC PLUG VALVE
WITH FLANGED ENDS
AND GEAR - OP NUT
SIZES 3" -16"**

DRAWING NO.- SUB910401T REV - 10

DRAWN BY - J CAPPER

8 INCH SHOWN, BURIED GEAR



DIMENSIONS														
A	B	C	D	E	F	G	H	I	J	K	Weight (lbs.)	JPM Gear	Gear Ratio	No. Turns to Open (Approx.)
3	8.00	.75	7.50	4 x 5/8-11 I .79	---	6.00	3.76	7.50	9.01	2.8	75 lbs.	JPM12B	40	10
4	9.00	.94	9.00	4 x 5/8-11 I .79	4 x .75	7.50	4.63	8.28	9.01	2.8	100 lbs.	JPM12B	40	10
6	10.50	1.02	11.00	4 x 3/4-10 I .79	4 x .81	9.50	5.78	10.30	9.41	2.8	165 lbs.	JPM12FB	40	10
8	11.50	1.13	13.50	4 x 3/4-10 I .79	4 x .88	11.75	7.48	12.54	9.41	2.8	230 lbs.	JPM12FB	40	10
10	13.00	1.19	16.00	8 x 7/8-9 I .79	4 x 1.00	14.25	8.88	14.02	10.08	3.9	340 lbs.	JPM14B	53	13
12	14.00	1.26	19.00	8 x 7/8-9 I .79	4 x 1.00	17.00	11.00	16.38	10.08	3.9	480 lbs.	JPM14B	53	13
14	17.00	1.38	21.00	8 x 1-8 UNS I 1.54	4 x 1.13	18.75	12.88	18.00	10.71	4.9	720 lbs.	JPM15B	68	17
16	17.75	1.44	23.50	8 x 1-8 UNS I 1.06	8 x 1.13	21.25	14.69	22.50	10.71	4.9	850 lbs.	JPM15B	68	17

SIZE RANGE	WATER WORKING PRESSURE PSI	HYDROSTATIC TEST PSI
3-12	175 PSI	262.5 PSI
14-16	150 PSI	225 PSI

ITEM	PART NAME	ASTM DESIGNATION	QTY
1	Lower Sleeve Bearing	Sintered Alloy SS316	1
2	Lower Grit Seal	NBR	1
3	Lower Thrust Washer	PTFE	1
4	Plug	ASTM A536 65-45-12 OR 70-50-05 +NBR	1
5	Body	ASTM A536 65-45-12 OR 70-50-05	1
6	Upper Thrust Washer	PTFE	1
7	Upper Grit Seal	NBR	1
8	Upper Sleeve Bearing	Sintered Alloy SS316	1
9	V-Packing	NBR	1
10	Follower Gland	ASTM A536 65-45-12 OR 70-50-05	1
11	Hex Nuts	Stainless Steel ASTM A276.T316	2
12	Studs	Stainless Steel ASTM A276.T316	2
13	Adapter	ASTM A536 65-45-12 OR 70-50-05	1
14	Adapter Bolts	Stainless Steel ASTM A276.T316	6
15	Cover Bolts	Stainless Steel ASTM A276.T316	4
16	Cover	ASTM A536 65-45-12 OR 70-50-05	1
17	Cover O-ring	NBR	1
18	JPM Gear w/ HW	-----	1
19	Slot Type Spring Pin	ASTM A29 1566	1

NOTE:

1. Body castings are tri-marked with "Clow", "Kennedy", and "M&H".
2. For services with 3"-8" Plug Valves in excess of 25 PSI, use of a gear is recommended.
3. Gear model and brand are subject to change without notice.



MCWANE
PLANT & INDUSTRIAL

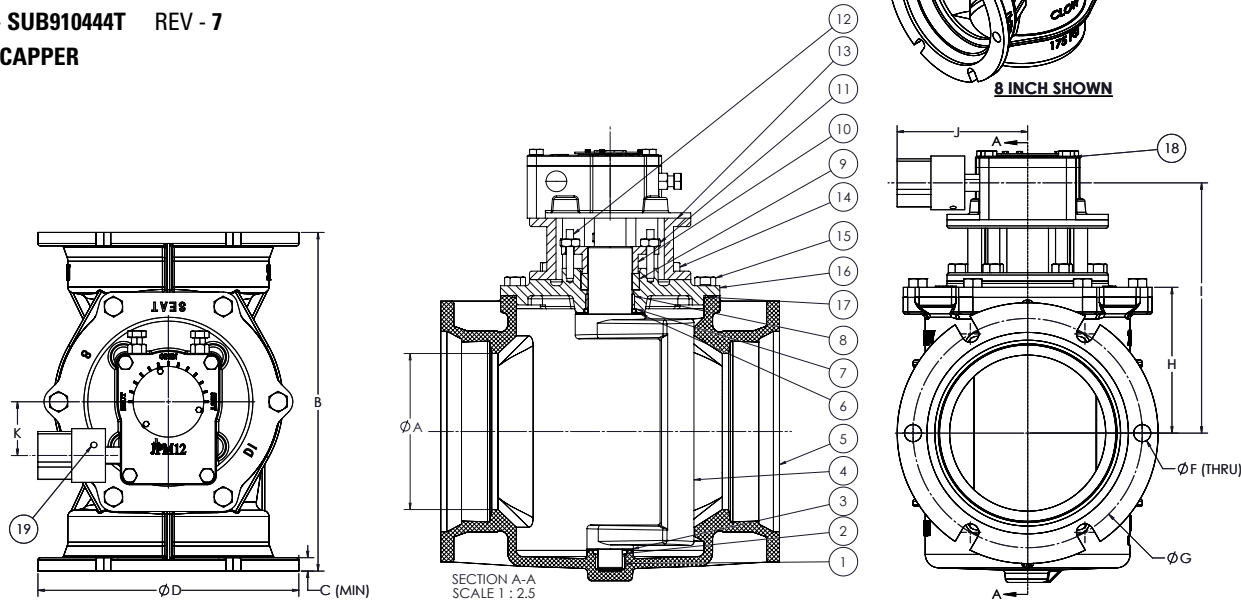


KENNEDY VALVE

**100% FULL FLOW
ECCENTRIC PLUG VALVE
WITH MECH. JOINT ENDS
AND GEAR - OP NUT
SIZES 3"-16"**

DRAWING NO.- SUB910444T REV - 7

DRAWN BY - J CAPPER



DIMENSIONS													
A	B	C	D	F	G	H	I	J	K	Weight (lbs.)	JPM Gear	Gear Ratio	No. Turns to Open (Approx.)
3	11.50	.58	7.62	4 x .75 THRU	6.19	3.76	7.50	9.01	2.8	75 lbs.	JPM12B	40	10
4	14.25	.60	9.06	4 x .88 THRU	7.50	4.65	8.28	9.01	2.8	100 lbs.	JPM12B	40	10
6	15.75	.63	11.06	6 x .88 THRU	9.50	5.78	10.30	9.41	2.8	165 lbs.	JPM12FB	40	10
8	17.36	.66	13.39	6 x .88 THRU	11.75	7.48	12.54	9.41	2.8	230 lbs.	JPM12FB	40	10
10	19.37	.70	15.62	8 x .88 THRU	14.25	8.88	14.02	10.08	3.9	340 lbs.	JPM14B	53	13
12	20.75	.73	17.88	8 x .88 THRU	16.25	11.00	16.38	10.08	3.9	480 lbs.	JPM14B	53	13
14	24.50	.79	20.25	10 x .88 THRU	18.75	12.88	18.00	10.71	4.9	720 lbs.	JPM15B	68	17
16	27.25	.85	22.50	12 x .88 THRU	21.00	14.69	22.50	10.71	4.9	850 lbs.	JPM15B	68	17

SIZE RANGE	WATER WORKING PRESSURE PSI	HYDROSTATIC TEST PSI
3-12	175 PSI	262.5 PSI
14-16	150 PSI	225 PSI

ITEM	PART NAME	ASTM DESIGNATION	QTY
1	Lower Sleeve Bearing	Sintered Alloy SS316	1
2	Lower Grit Seal	NBR	1
3	Lower Thrust Washer	PTFE	1
4	Plug	ASTM A536 65-45-12 OR 70-50-05 +NBR	1
5	Body	ASTM A536 65-45-12 OR 70-50-05	1
6	Upper Thrust Washer	PTFE	1
7	Upper Grit Seal	NBR	1
8	Upper Sleeve Bearing	Sintered Alloy SS316	1
9	V-Packing	NBR	1
10	Follower Gland	ASTM A536 65-45-12 OR 70-50-05	1
11	Hex Nuts	Stainless Steel ASTM A276.T316	2
12	Studs	Stainless Steel ASTM A276.T316	2
13	Adapter	ASTM A536 65-45-12 OR 70-50-05	1
14	Adapter Bolts	Stainless Steel ASTM A276.T316	6
15	Cover Bolts	Stainless Steel ASTM A276.T316	4
16	Cover	ASTM A536 65-45-12 OR 70-50-05	1
17	Cover O-ring	NBR	1
18	JPM Gear w/ HW	-----	1
19	Slot Type Spring Pin	ASTM A29 1566	1

NOTE:

1. Body castings are tri-marked with "Clow", "Kennedy", and "M&H".



MCWANE
PLANT & INDUSTRIAL



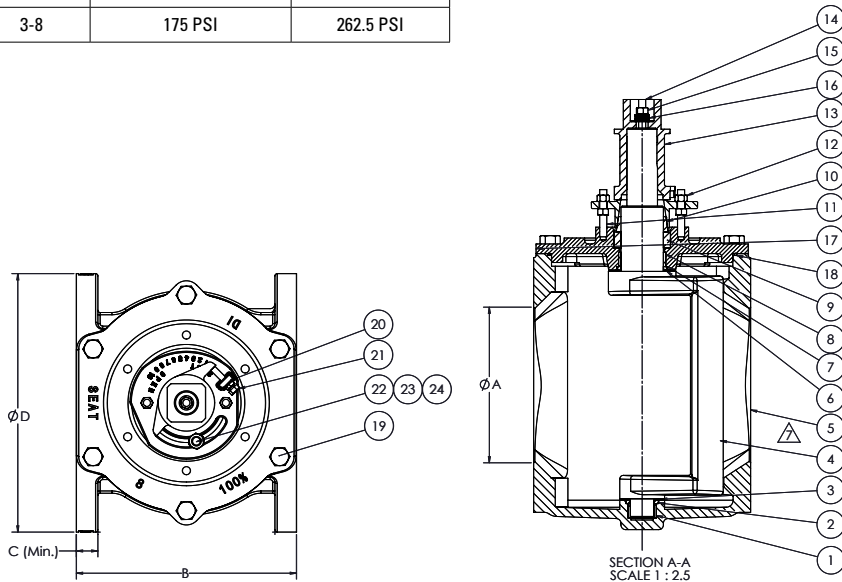
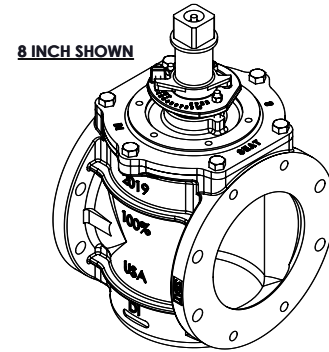
KENNEDY VALVE

100% FULL FLOW ECCENTRIC PLUG VALVE WITH FLANGED ENDS AND DIRECT DRIVE - OP NUT SIZES 3"-8"

DRAWING NO.- SUB910245T REV - 7

DRAWN BY - CAW

SIZE RANGE	WATER WORKING PRESSURE PSI	HYDROSTATIC TEST PSI
3-8	175 PSI	262.5 PSI



DIMENSIONS										
A	B	C	D	E	F	G	H	I	J	Weight (lbs.)
3	8.00	.75	7.50	4 x 5/8-11 I .79	---	6.00	3.76	9.38	13.24	50 lbs.
4	9.00	.94	9.00	4 x 5/8-11 I .79	4 x .75	7.50	4.65	10.15	14.86	75 lbs.
6	10.50	1.02	11.00	4 x 3/4-10 I .79	4 x .81	9.50	5.78	12.96	18.75	125 lbs.
8	11.50	1.13	13.50	4 x 3/4-10 I .79	4 x .88	11.75	7.48	15.13	22.79	185 lbs.

ITEM	PART NAME	ASTM DESIGNATION	QTY
1	Lower Sleeve Bearing	Sintered Alloy SS316	1
2	Lower Grit Seal	NBR	1
3	Lower Thrust Washer	PTFE	1
4	Plug	ASTM A536 65-45-12 OR 70-50-05 +NBR	1
5	Body	ASTM A536 65-45-12 OR 70-50-05	1
6	Upper Thrust Washer	PTFE	1
7	Upper Grit Seal	NBR	1
8	Upper Sleeve Bearing	Sintered Alloy SS316	1
9	V-Packing	NBR	1
10	Brake	PPS 40% Glass Filled	1
11	Cover Studs	Stainless Steel ASTM A276.1316	4
12	Cover Stud Hex Nuts	Stainless Steel ASTM A276.1316	2
13	2" Sq. OP-Nut	ASTM A536 65-45-12 OR 70-50-05	1
14	Plug Stem Stud	Stainless Steel ASTM A276.1316	1
15	Hex Locking Nut	Stainless Steel ASTM A276.1316	1
16	Disc Spring Washer	Stainless Steel ASTM A276.1316	5
17	Cover	ASTM A536 65-45-12 OR 70-50-05	1
18	Cover O-ring	NBR	1
19	Cover Bolts	Stainless Steel ASTM A276.1316	4
20	Hex Jam Nut	Stainless Steel ASTM A276.1316	1
21	Followe Sq. Head Set Screw	Stainless Steel ASTM A276.1316	1
22	Socket Head Capscrew	Stainless Steel ASTM A276.1316	1
23	Washer	Stainless Steel ASTM A276.1316	1
24	Hex Jam Nut	Stainless Steel ASTM A276.1316	1

NOTE:

1. Body castings are tri-marked with "Clow", "Kennedy", and "M&H".
2. 2" OP Nut accepts standard 2" lever / wrench.
3. For service in excess of 25 PSI, use of a gear is recommended.



MCWANE
PLANT & INDUSTRIAL



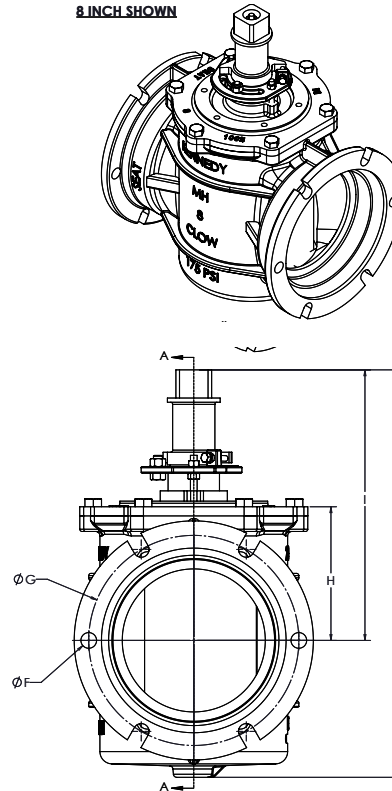
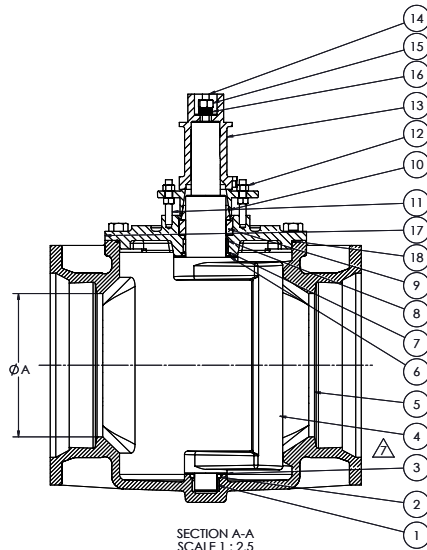
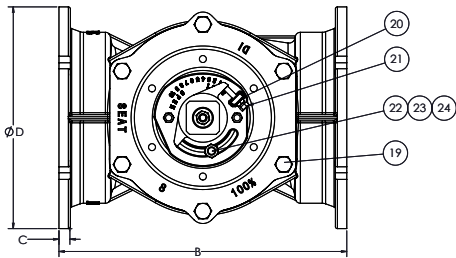
KENNEDY VALVE

100% FULL FLOW ECCENTRIC PLUG VALVE WITH MECH. JOINT ENDS AND DIRECT DRIVE-OP NUT SIZES 3" - 8"

DRAWING NO.- SUB910208T REV - 7

DRAWN BY - CAW

SIZE RANGE	WATER WORKING PRESSURE PSI	HYDROSTATIC TEST PSI
3-8	175 PSI	262.5 PSI



DIMENSIONS									
A	B	C	D	F	G	H	I	J	Weight (lbs.)
3	11.50	.58	Ø 7.62	4 x .75 THRU	Ø 6.19	3.76	9.38	13.24	70 lbs.
4	14.25	.60	Ø 9.06	4 x .88 THRU	Ø 7.50	4.65	10.15	14.86	100 lbs.
6	15.75	.63	Ø 11.06	6 x .88 THRU	Ø 9.50	5.78	12.96	18.75	145 lbs.
8	17.36	.66	Ø 13.39	6 x .88 THRU	Ø 11.75	7.48	15.13	22.79	200 lbs.

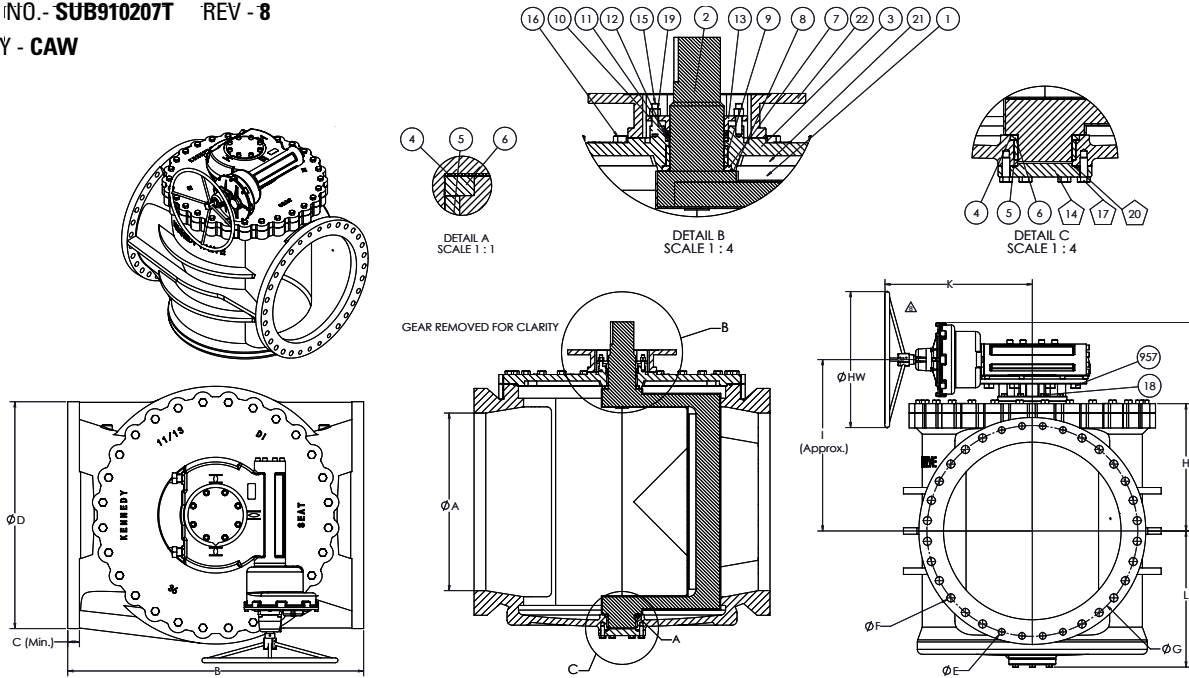
ITEM	PART NAME	ASTM DESIGNATION	QTY
1	Lower Sleeve Bearing	Sintered Alloy SS316	1
2	Lower Grit Seal	NBR	1
3	Lower Thrust Washer	PTFE	1
4	Plug	ASTM A536 65-45-12 OR 70-50-05 +NBR	1
5	Body	ASTM A536 65-45-12 OR 70-50-05	1
6	Upper Thrust Washer	PTFE	1
7	Upper Grit Seal	NBR	1
8	Upper Sleeve Bearing	Sintered Alloy SS316	1
9	V-Packing	NBR	1
10	Brake	PPS 40% Glass Filled	1
11	Cover Studs	Stainless Steel ASTM A276.1316	4
12	Cover Stud Hex Nuts	Stainless Steel ASTM A276.1316	2
13	2" Sq. OP-Nut	ASTM A536 65-45-12 OR 70-50-05	1
14	Plug Stem Stud	Stainless Steel ASTM A276.1316	1
15	Hex Locking Nut	Stainless Steel ASTM A276.1316	1
16	Disc Spring Washer	Stainless Steel ASTM A276.1316	5
17	Cover	ASTM A536 65-45-12 OR 70-50-05	1
18	Cover O-ring	NBR	1
19	Cover Bolts	Stainless Steel ASTM A276.1316	4
20	Hex Jam Nut	Stainless Steel ASTM A276.1316	1
21	Followe Sq. Head Set Screw	Stainless Steel ASTM A276.1316	1
22	Socket Head Capscrew	Stainless Steel ASTM A276.1316	1
23	Washer	Stainless Steel ASTM A276.1316	1
24	Hex Jam Nut	Stainless Steel ASTM A276.1316	1

NOTE:

1. Body castings are tri-marked with "Clow", "Kennedy", and "M&H".
2. For service in excess of 25 PSI, use of a gear is recommended.

**100% FULL FLOW
ECCENTRIC PLUG VALVE
WITH FLANGED ENDS
AND GEAR-HW
SIZES 18"-36"**

DRAWING NO. - **SUB910207T** REV - **8**
DRAWN BY - **CAW**



ITEM	PART NAME	ASTM DESIGNATION
1	Body	ASTM A536 65-45-12 OR 70-50-05
2	Plug	ASTM A536 65-45-12 OR 70-50-05 +NBR
3	Cover	ASTM A536 65-45-12 OR 70-50-05
4	Bottom Thrust Washer	PTFE
5	Bottom Bearing	Sintered Alloy SS316
6	GRT Guard Shaft Seal (Lower)	NBR
7	GRT Guard Shaft Seal (Upper)	NBR
8	Upper Thrust Washer	PTFE
9	Upper Bearing Washer	Sintered Alloy SS316
10	V2-Packing-A N6225-55	NBR
11	V2-Top-Packing-A N6225-55	NBR
12	V2-Bottom-Packing-A N6225-55	NBR
13	FP Guard (For Actuator)	ASTM A536 65-45-12 OR 70-50-05
14	Bottom Cover	ASTM A536 65-45-12 OR 70-50-05
15	Cover Studs	Stainless Steel ASTM A276.1316
16	Hexagon Cover Bolts	Stainless Steel ASTM A276.1316
17	Bottom Cover Bolts	Stainless Steel ASTM A276.1316
18	Hexagon Adapter Bolts	Stainless Steel ASTM A276.1316
19	Hex Nut	Stainless Steel ASTM A276.1316
20	O-ring - Bottom Cover	NBR
21	O-ring - Top Cover	NBR
22	FP Adapter - Close	ASTM A536 65-45-12 OR 70-50-05
49	Rotork Gear w/ HW	- - -
957	Gear Bolts	Stainless Steel ASTM A276.1316

DIMENSIONS													Weight (lbs.)	Rotork Gear	Gear Ratio	Turns to Open (Approx.)	Ø HW	Water Working Press. PSI	Hydrostatic Test Press. PSI
A	B	C	D	E	F	G	H	I	J	K	L								
18	21.50	1.58	Ø 25.00	8 x 1.13-7 UNS-2B T 1.50	8 x Ø 1.25 THRU	Ø 22.75	16.42	21.50	27.6	17.7	18.3	1270	IW6 AWWA-IP68	152:1	38	30.0	150 PSI	225 PSI	
20	23.50	1.69	Ø 27.50	8 x 1.13-7 UNS-2B T 1.25	12 x Ø 1.25 THRU	Ø 25.00	17.09	22.25	28.6	17.7	17.4	1545	IW6 AWWA-IP68	228:1	57				
24	42.00	1.88	Ø 32.00	8 x 1.25-7 UNS-2B T 2.00	12 x Ø 1.38 THRU	Ø 29.50	21.06	28.00	35.4	23.8	21.8	3429	IW7 AWWA-IP68	384:1	96				
30	51.00	2.13	Ø 38.75	8 x 1.25-7 UNS-2B T 2.63	20 x Ø 1.38 THRU	Ø 36.00	22.19	30.69	37.2	29.9	22.5	6145	IW9 AWWA-IP68	696:1	174				
36	60.00	2.38	Ø 46.00	8 x 1.50-6 UNS-2B T 3.50	24 x Ø 1.63 THRU	Ø 42.75	25.81	34.75	42.3	29.9	27.7	8532	IW9 AWWA-IP68	928:1	232				40.0

NOTE:

- Interior and exterior ferrous metal surfaces epoxy coated to comply with the AWWA C550 Standard.
- Standard with handwheel on flanged valves.
- Only 30" and 36" valves have a bottom cover plate (see pentagon ballon items).
- Body castings are tri-marked with "Clow", "Kennedy", and "M&H".



MCWANE
PLANT & INDUSTRIAL



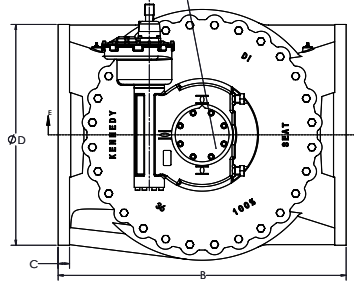
KENNEDY VALVE

100% FULL FLOW ECCENTRIC PLUG VALVE WITH FLANGED ENDS AND GEAR FOR BURIED SERVICE SIZES 18" - 36"

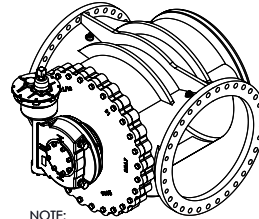
DRAWING NO.- SUB910257T REV - 9

DRAWN BY - CAW

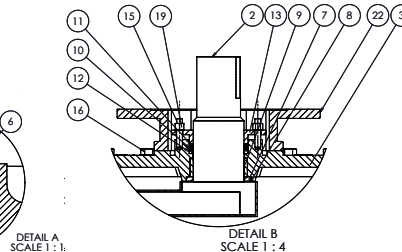
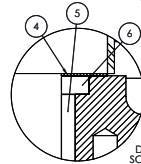
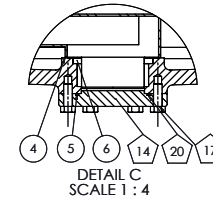
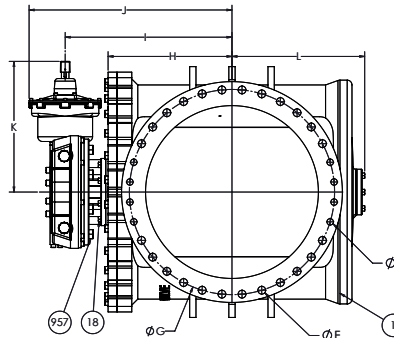
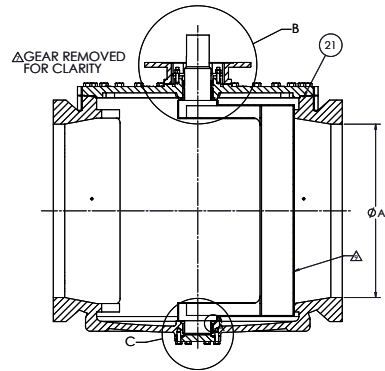
GEARBOX FOR BURIED SERVICE WILL NOT HAVE POSITION INDICATOR



RECOMMENDED ORIENTATION FOR BURIED SERVICE:



NOTE:
• 36" VALVE SHOWN
• SHOWN OPEN WITH PLUG UP



ITEM	PART NAME	ASTM DESIGNATION
1	Body - Flanged	ASTM A536 65-45-12 OR 70-50-05
2	Plug	ASTM A536 65-45-12 OR 70-50-05 +NBR
3	Cover	ASTM A536 65-45-12 OR 70-50-05
4	Bottom Thrust Washer	PTFE
5	Botom Bearing	Sintered Alloy SS316
6	GRT Guard Shaft Seal (Lower)	NBR
7	GRT Guard Shaft Seal (Upper)	NBR
8	Upper Thrust Washer	PTFE
9	Upper Bearing Washer	Sintered Alloy SS316
10	V2-Packing-A N6225-55	NBR
11	V2-Top-Packing-A N6225-55	NBR
12	V2-Bottom-Packing-A N6225-55	NBR
13	FP Guard (For Actuator)	ASTM A536 65-45-12 OR 70-50-05
14	Bottom Cover	ASTM A536 65-45-12 OR 70-50-05
15	Cover Studs	Stainless Steel ASTM A276.1316
16	Hexagon Cover Bolts	Stainless Steel ASTM A276.1316
17	Bottom Cover Bolts	Stainless Steel ASTM A276.1316
18	Hexagon Adapter Bolts	Stainless Steel ASTM A276.1316
19	Hex Nut	Stainless Steel ASTM A276.1316
20	O-ring - Bottom Cover	NBR
21	O-ring - Top Cover	NBR
22	FP Adapter - Close	ASTM A536 65-45-12 OR 70-50-05
957	Gear Bolts	Stainless Steel ASTM A276.1316

DIMENSIONS													Weight (lbs.)	Rotork Gear	Gear Ratio	Turns to Open (Approx.)	Water Working Press. PSI	Hydrostatic Test Press. PSI
A	B	C	D	E	F	G	H	I	J	K	L							
18	21.50	1.58	Ø 25.00	8 x 1.13-7 UNS-2B T 1.50	8 x Ø 1.25 THRU	Ø 22.75	16.42	22.7	27.6	15.5	18.3	1262	IW6 AWWA-IP68	152:1	38	150 PSI	225 PSI	
20	23.50	1.69	Ø 27.50	8 x 1.13-7 UNS-2B T 1.25	12 x Ø 1.25 THRU	Ø 25.00	17.09	23.7	28.6	15.5	17.4	1537	IW6 AWWA-IP68	228:1	57			
24	42.00	1.88	Ø 32.00	8 x 1.25-7 UNS-2B T 2.00	12 x Ø 1.38 THRU	Ø 29.50	21.06	27.4	35.4	21.6	21.8	3421	IW7 AWWA-IP68	384:1	96			
30	51.00	2.13	Ø 38.75	8 x 1.25-7 UNS-2B T 2.63	20 x Ø 1.38	Ø 36.00	22.19	30.3	37.2	27.2	22.5	6135	IW9 AWWA-IP68	696:1	174			
36	60.00	2.38	Ø 46.00	8 x 1.50-6 UNS-2B T 3.50	24 x Ø 1.63 THRU	Ø 42.75	25.81	34.7	42.3	27.2	27.7	8515	IW9 AWWA-IP68	928:1	232			

NOTE:

1. Interior and exterior ferrous metal surfaces are epoxy coated.
2. Only 30" and 36" valves have a bottom cover plate (see pentagon ballon items).
3. Mount in orientation shown for buried service.
4. Gearbox for buried service will not have position indicator.
5. Body castings are tri-marked with "Clow", "Kennedy", and "M&H".



MCWANE
PLANT & INDUSTRIAL

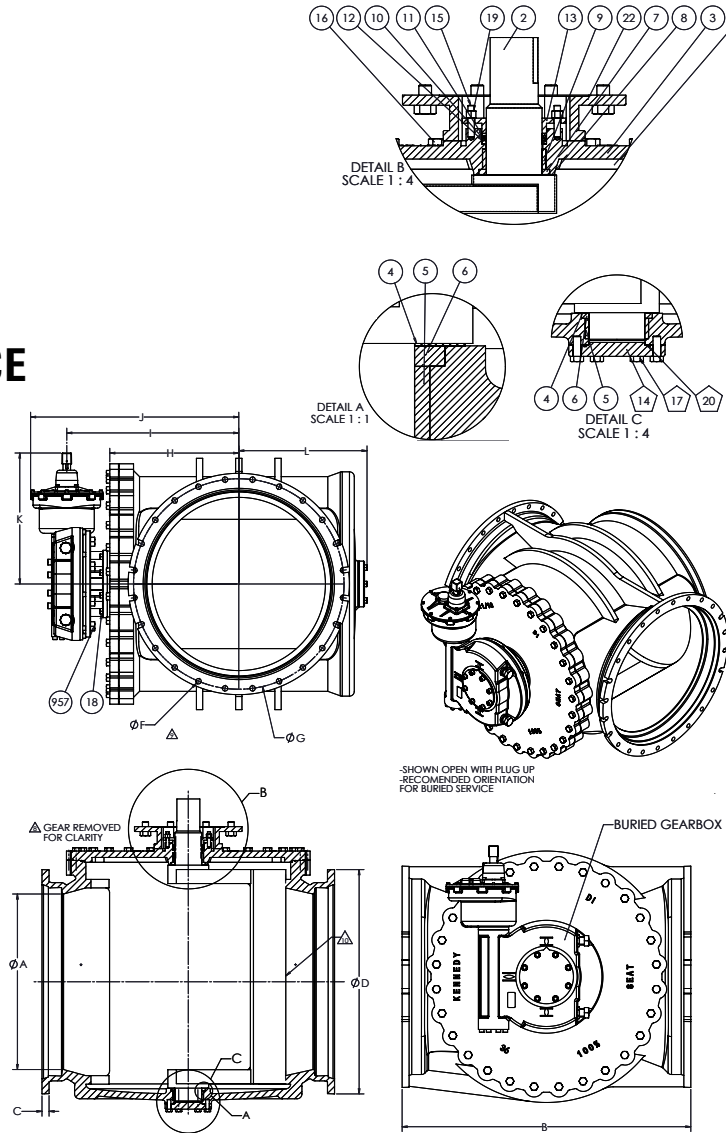


KENNEDY VALVE

100% FULL FLOW ECCENTRIC PLUG VALVE WITH MECH. JOINT ENDS AND GEAR FOR BURIED SERVICE SIZES 18" - 36"

DRAWING NO.- SUB910280T REV - 10

DRAWN BY - CAW



ITEM	PART NAME	ASTM DESIGNATION
1	Body - MJ	ASTM A536 65-45-12 OR 70-50-05
2	Plug	ASTM A536 65-45-12 OR 70-50-05 +NBR
3	Cover	ASTM A536 65-45-12 OR 70-50-05
4	Bottom Thrust Washer	PTFE
5	Botom Bearing	Sintered Alloy SS316
6	GRT Guard Shaft Seal (Lower)	NBR
7	GRT Guard Shaft Seal (Upper)	NBR
8	Upper Thrust Washer	PTFE
9	Upper Bearing Washer	Sintered Alloy SS316
10	V2-Packing-A N6225-55	NBR
11	V2-Top-Packing-A N6225-55	NBR
12	V2-Bottom-Packing-A N6225-55	NBR
13	FP Guard (For Actuator)	ASTM A536 65-45-12 OR 70-50-05
14	Bottom Cover	ASTM A536 65-45-12 OR 70-50-05
15	Cover Studs	Stainless Steel ASTM A276.1316
16	Hexagon Cover Bolts	Stainless Steel ASTM A276.1316
17	Bottom Cover Bolts	Stainless Steel ASTM A276.1316
18	Hexagon Adapter Bolts	Stainless Steel ASTM A276.1316
19	Cover Stud Hex Nut	Stainless Steel ASTM A276.1316
20	O-ring - Bottom Cover	NBR
21	O-ring - Top Cover	NBR
22	FP Adapter - Close	ASTM A536 65-45-12 OR 70-50-05
957	Gear Bolts	Stainless Steel ASTM A276.1316

DIMENSIONS											Weight (lbs.)	Rotork Gear	Gear Ratio	Turns to Open (Approx.)	Water Working Press. PSI	Hydrostatic Test Press. PSI
A	B	C	D	F	G	H	I	J	K	L						
18	29.25	1.00	Ø 24.84	12 x Ø 7/8 THRU	Ø 23-1/4	16.42	21.50	27.6	15.5	18.3	1262	IW6 AWWA-IP68	152:1	38	150 PSI	225 PSI
20	31.00	1.02	Ø 27.08	14 x Ø 7/8 THRU	Ø 25-1/2	17.09	22.25	28.6	15.5	17.4	1537	IW6 AWWA-IP68	228:1	57		
24	42.00	1.02	Ø 31.57	16 x Ø 7/8 THRU	Ø 30	21.06	26.37	35.4	21.6	21.8	3421	IW7 AWWA-IP68	384:1	96		
30	51.00	1.32	Ø 39.12	20 x Ø 1-1/8 THRU	Ø 36-7/8	22.19	30.69	37.2	27.2	22.5	6135	IW9 AWWA-IP68	696:1	174		
36	60.00	1.45	Ø 46.00	24 x Ø 1-1/8 THRU	Ø 43-3/4	26.81	35.75	43.2	27.2	26.6	8515	IW9 AWWA-IP68	928:1	232		

NOTE:

1. Interior and exterior ferrous metal surfaces are epoxy coated.
2. Only 30" and 36" valves have a bottom cover plate (see pentagon ballon items).
3. Mount in orientation shown for buried service.
4. Gearbox for buried service will not have position indicator.
5. Body castings are tri-marked with "Clow", "Kennedy", and "M&H".



MCWANE
PLANT & INDUSTRIAL

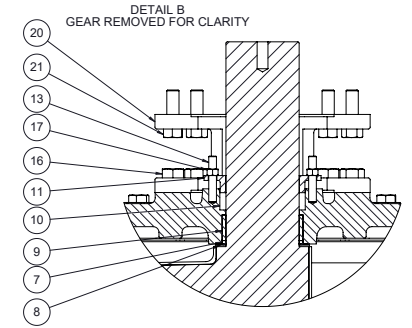
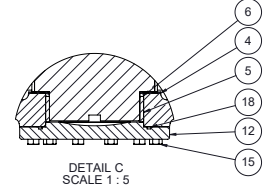
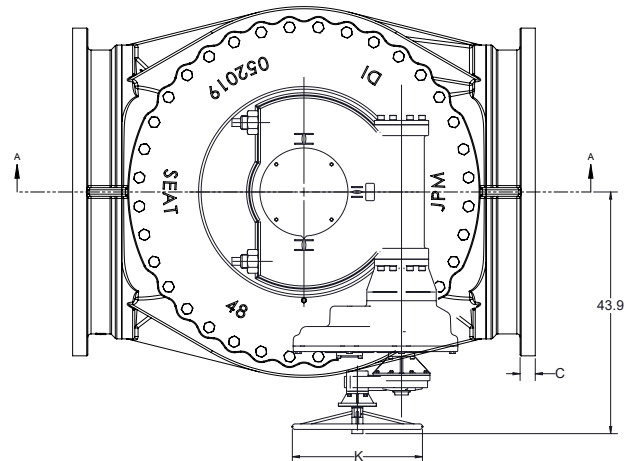
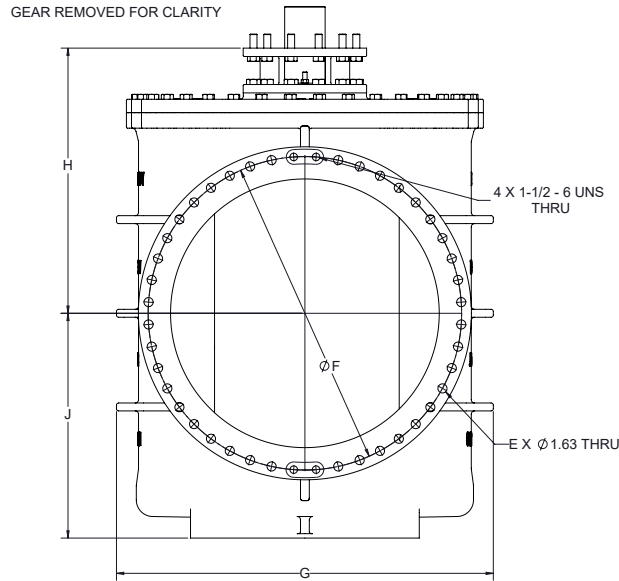
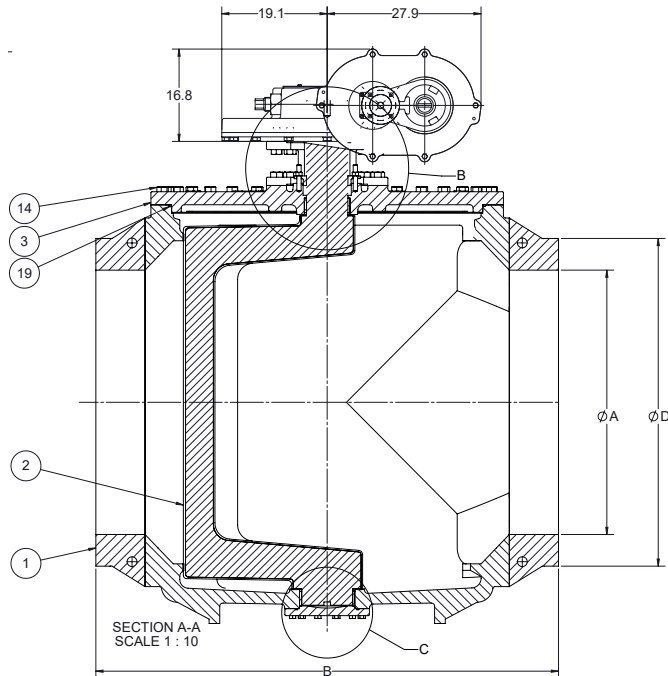


KENNEDY VALVE

100% FULL FLOW ECCENTRIC PLUG VALVE WITH FLANGED ENDS AND ROTORK GEAR SIZES 42"-48"

DRAWING NO.- SUB92017IT REV - 1

DRAWN BY - CAW



ITEM	PART NAME	ASTM DESIGNATION
1	Body	ASTM A536 65-45-12 OR 70-50-05
2	Plug	ASTM A536 65-45-12 OR 70-50-05 +NBR
3	Cover	ASTM A536 65-45-12 OR 70-50-05
4	Bottom Thrust Washer	PTFE
5	Bottom Bearing	Sintered Alloy SS316
6	GRT Guard Shaft Seal (Lower)	NBR
7	GRT Guard Shaft Seal (Upper)	NBR
8	Upper Thrust Washer	PTFE
9	Upper Bearing	Sintered Alloy SS316
10	V-Packing	NBR
11	Follower Gland	ASTM A536 65-45-12 OR 70-50-05
12	Bottom Cover	ASTM A536 65-45-12 OR 70-50-05
13	Gland Stud	Stainless Steel ASTM A276 T316
14	Cover Bolt	Stainless Steel ASTM A276 T316
15	Bottom Cover Bolt	Stainless Steel ASTM A276.1316
16	Stand Bolt	Stainless Steel ASTM A276.1316
17	Gland Nut	Stainless Steel ASTM A276.1316
18	O-ring - Bottom Cover	NBR
19	O-ring - Top Cover	NBR
20	Stand	ASTM A536 65-45-12 OR 70-50-05
21	Gear Bolt	Stainless Steel ASTM A276.1316
22	Rotork IW12/IR4/AS5 2374:1	- - -

NOTE:

1. Interior and exterior ferrous metal surfaces are epoxy coated.
2. Body castings tri-marked with "Clow", "Kennedy", and "M&H".
3. Rated to 150 PSI.

DIMENSIONS									
A (SIZE)	B	C	D	E	F	G	H	J	K
Ø42.00	72.00	2.63	Ø53.00	32	Ø49.50	59.5	43.23	37.40	Ø23.62
Ø48.00	84.00	2.75	Ø59.50	40	Ø56.00	67.3	47.37	40/16	Ø27.56



MCWANE
PLANT & INDUSTRIAL

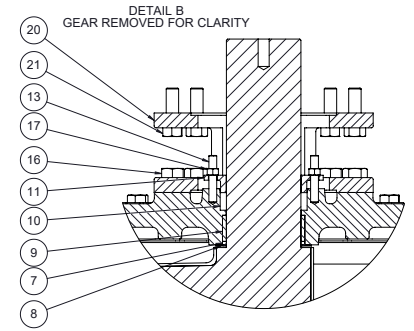
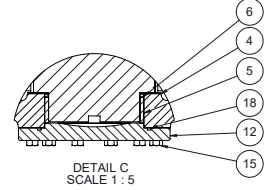
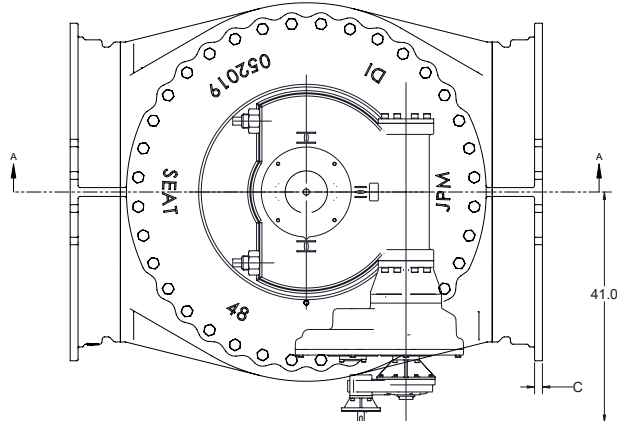
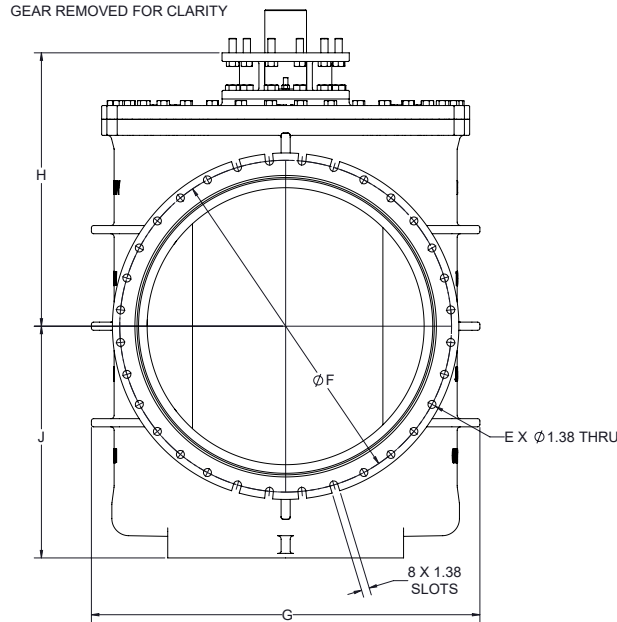
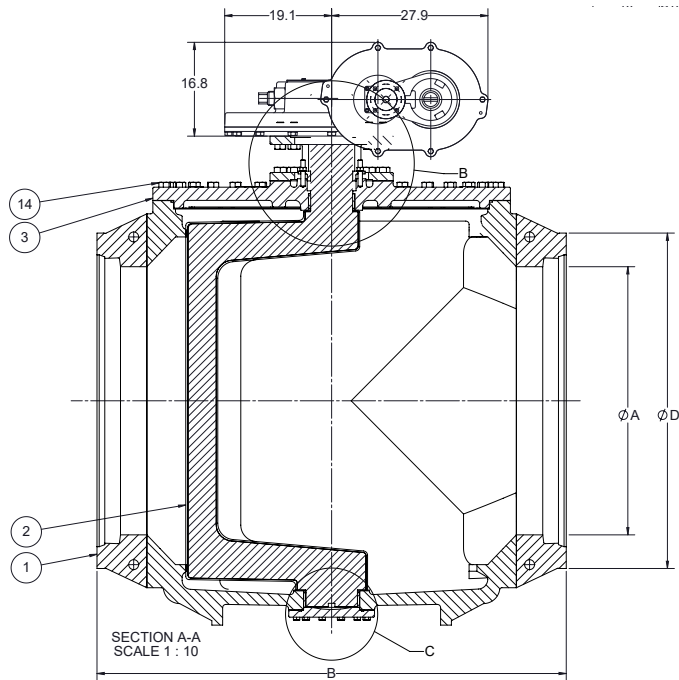


KENNEDY VALVE

100% FULL FLOW ECCENTRIC PLUG VALVE WITH MECHANICAL JOINTS AND ROTORK GEAR SIZES 42"-48"

DRAWING NO.- SUB920162T REV - 1

DRAWN BY - CAW



DIMENSIONS								
A (SIZE)	B	C	D	E	F	G	H	J
Ø42.00	72.00	1.40	Ø53.35	20	Ø50.62	59.5	43.23	37.40
Ø48.00	84.00	1.40	Ø60.00	24	Ø57.50	67.3	47.37	40/16

NOTE:

1. Interior and exterior ferrous metal surfaces are epoxy coated.
2. Body castings tri-marked with "Clow", "Kennedy", and "M&H".
3. Rated to 150 PSI.

ITEM	PART NAME	ASTM DESIGNATION
1	Body	ASTM A536 65-45-12 OR 70-50-05
2	Plug	ASTM A536 65-45-12 OR 70-50-05 +NBR
3	Cover	ASTM A536 65-45-12 OR 70-50-05
4	Bottom Thrust Washer	PTFE
5	Bottom Bearing	Sintered Alloy SS316
6	GRT Guard Shaft Seal (Lower)	NBR
7	GRT Guard Shaft Seal (Upper)	NBR
8	Upper Thrust Washer	PTFE
9	Upper Bearing	Sintered Alloy SS316
10	V-Packing	NBR
11	Follower Gland	ASTM A536 65-45-12 OR 70-50-05
12	Bottom Cover	ASTM A536 65-45-12 OR 70-50-05
13	Gland Stud	Stainless Steel ASTM A276 T316
14	Cover Bolt	Stainless Steel ASTM A276 T316
15	Bottom Cover Bolt	Stainless Steel ASTM A276.1316
16	Stand Bolt	Stainless Steel ASTM A276.1316
17	Gland Nut	Stainless Steel ASTM A276.1316
18	O-ring - Bottom Cover	NBR
19	O-ring - Top Cover	NBR
20	Stand	ASTM A536 65-45-12 OR 70-50-05
21	Gear Bolt	Stainless Steel ASTM A276.1316
22	Rotork IW12/IR4/AS5 2374:1	---